

# Centec E330 Product Introduction

Centec Networks (SuZhou) Co. Ltd

2016.09

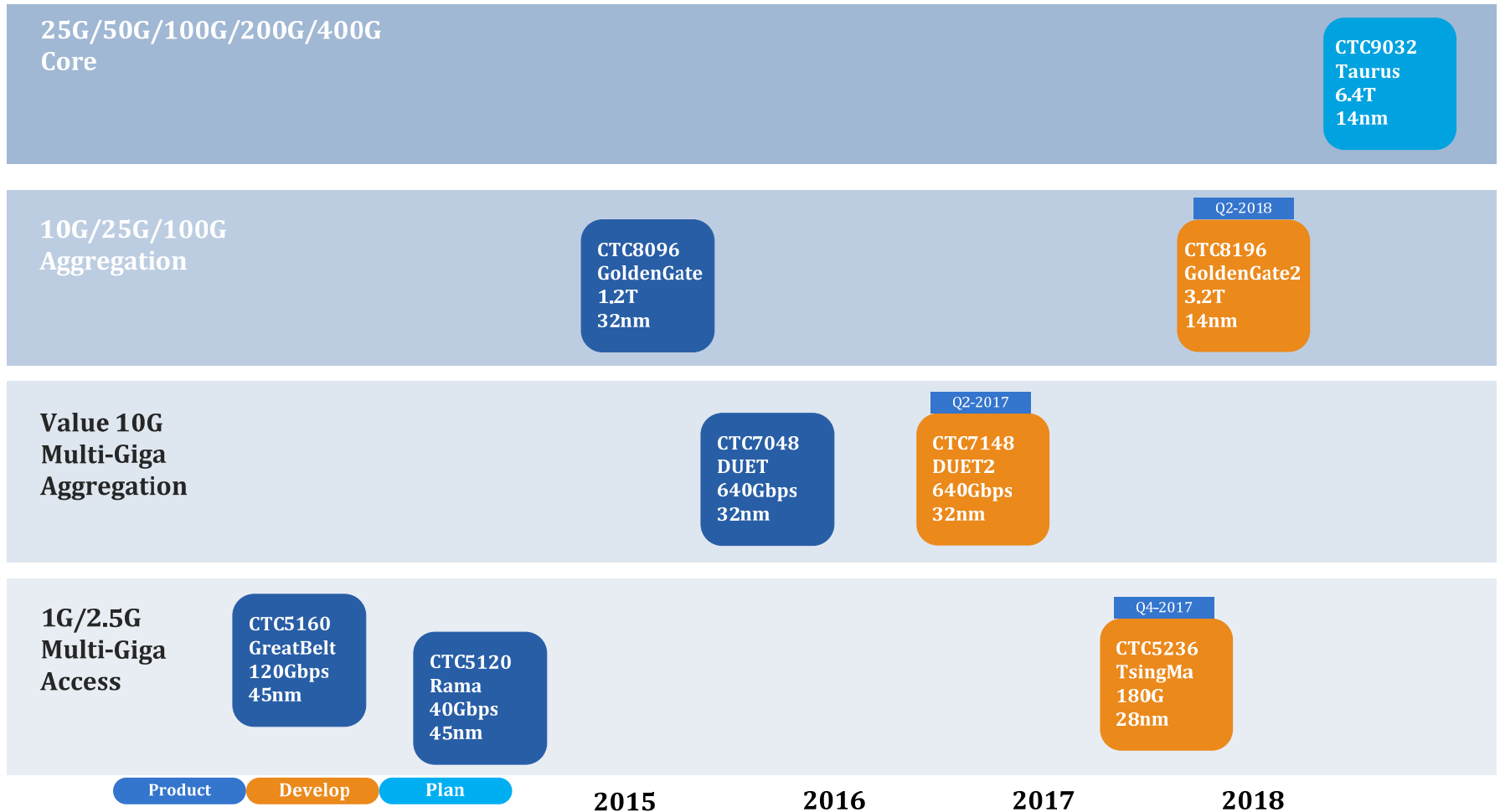




- **Centec Product Introduction: Silicon & E330**
- **E330 Product Details**
- **E330 Application Scenario**



## FULL Lineup from Access to Core





# Humber Series Overview



- High feature, high performance IP/Ethernet switching silicon with L2~L4 processing capability.



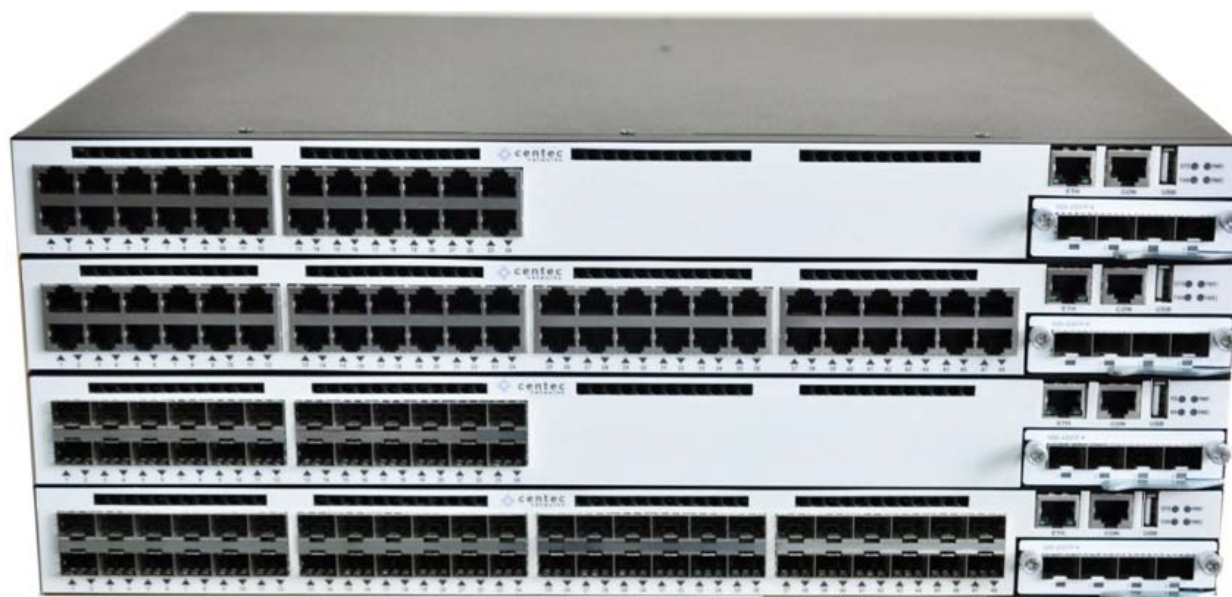
- **Key Features**

- 176 Gbps packet processing capability
- Up to 512K MAC
- Ethernet bridging, IPv4, IPv6 routing, MPLS/MPLS-TP switching, MPLS-TP OAM, SyncE, 1588, L2/L3 VPNs, NAT, ACL/QoS/H-QoS processing, DCB features (PFC, ETC, QCN, etc), CAPWAP, security features, etc.

Part Number	Application
CTC6048	Access/Aggregation platform for Carrier Ethernet and Packet Transport



- E330 Series is built on Centec's CTC6048 silicon, integrating L2/L3 advanced software suit to provide a complete system solution.





Models	Port Configuration	Description
<b>E330-52TX</b>	- 48 x10/100/1000M Base-T port - 4 x 10G SFP+ Port	<ul style="list-style-type: none"><li>■ Pluggable AC/DC Power Module</li><li>■ Pluggable and Speed Adjustable Fans (Front to Rear airflow )</li><li>■ Support RJ45 Console and Eth Management port</li></ul>
<b>E330-24T</b>	- 48 x10/100/1000M Base-T port - Modular Uplink	
<b>E330-52SX</b>	- 48 x10/100/1000M Base-X SFP port - 4 x 10G SFP+ Port	
<b>NM-4SFP+</b>	- 4x1G/10G SFP+ Ethernet Port (1G SFP compatible for E330-24T, 1G SFP is Combo with the last 4 RJ45 ports)	



# E330 Highlight Summary



- **Standard 1RU pizza-box solution**
- **176 Gbps switching capacity, Wire-speed for all 48x1GE + 4x10GE**
- **Cut through for Low latency**
- **Up to 32K MAC / 16K IP**
- **Low system power - less than 85W**
- **Support EFM/CFM/G.8031/G.8032 Metro L2 services**





# Centec System Solution Roadmap



## 3Q/2012

### CTC6048

- 48x1G + 4x10G
- 32K MAC / 16K IP
- MPLS / Metro
- 16Kx80 TCAM
- External TCAM Support



### E330

- 48x1G + 4x10G
- Product quality switch software



### V330

- 48x1G + 4x 10G
- OVS 1.5 / OF 1.0
- 2.5K 12-tuple flow
- NvGRE / MPLS tunnel
- Multi-destination
- More editing actions
- Complete Open Source

## 1H/2013

# 1G + 10G

### CTC5160

- 48x1G + 8x10G
- 128K MAC / 64K IP
- MPLS / Metro
- < \$100 in cost



## 2H/2013

### E350

- 48x1G + 4x10G
- 8x1G + 12x10G
- 24x40G
- Product quality switch software

### V350

- 48x1G + 4x10G
- 8x1G + 12x10G
- Large hash based flow

## 1H/2015

### GoldenGate

- 96 x 10G / 24 x 40G
- 48 x 10G + 4 x 100G
- 256K MAC / 128K IP
- MPLS / Metro
- SDN Innovations



### V580

- 48x10G + 2x40G + 4x100G
- 48x10G + 4x100G
- 24x40G
- 48x10G
- 32x10G
- Hybrid: OVS L2/OpenFlow
- Complete Open Source

### E580

- 48x10G + 2x40G + 4x100G
- 48x10G + 4x100G
- 24x40G
- 48x10G
- 32x10G
- Open source switch SW
- Based on Quagga
- Product quality

# 10G

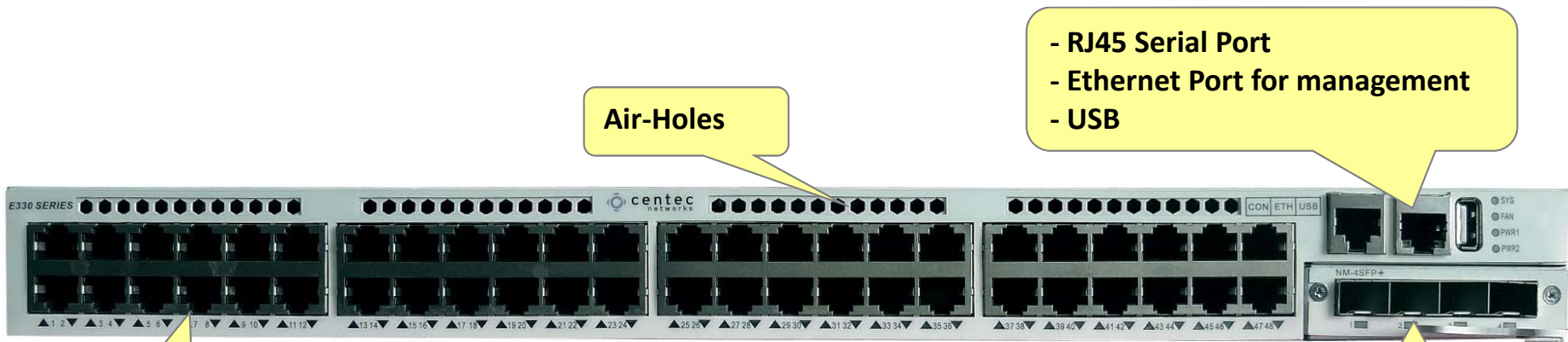




- Centec Product Introduction: Silicon & E330
- **E330 Product Details**
- E330 Application Scenario



# E330-52TX Hardware Platform

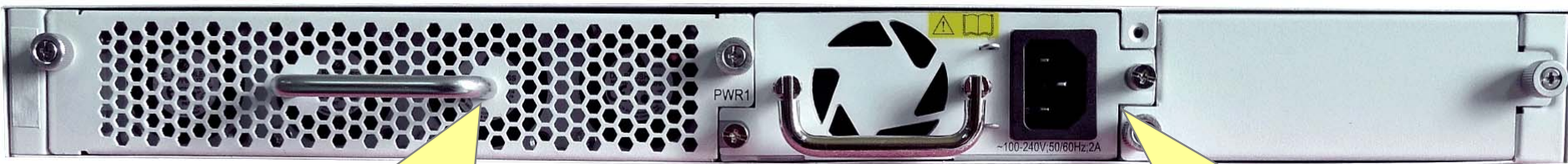


Air-Holes

- RJ45 Serial Port
- Ethernet Port for management
- USB

48x1GE Copper

4 SFP+ Uplink ports



Pluggable and speed-tunable fans

AC/DC replaceable dual power supply



# E330-24T Hardware Platform



Air-Holes

- RJ45 Serial Port
- Ethernet Port for management
- USB

24x1GE Copper

4 SFP+ Uplink ports

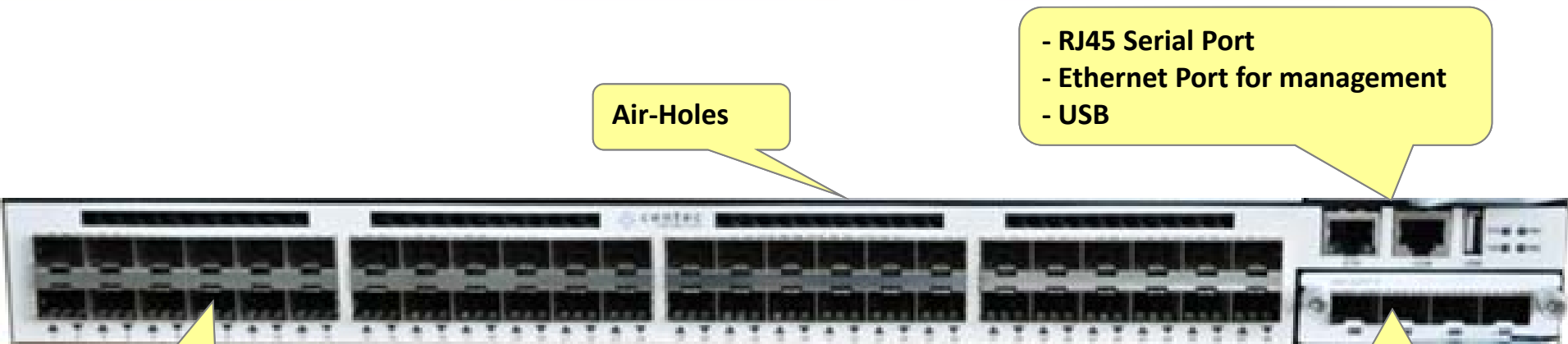


Pluggable and speed-tunable fans

AC/DC replaceable dual power supply



# E330-52SX Hardware Platform

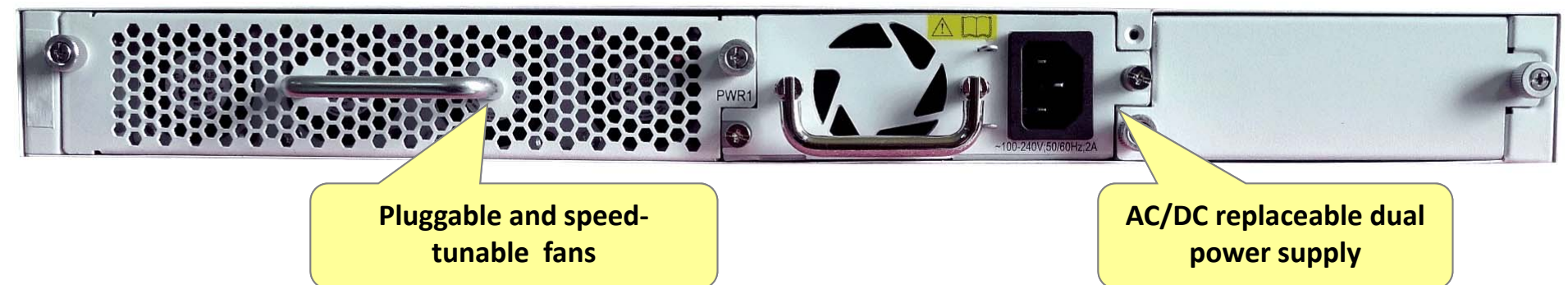


Air-Holes

- RJ45 Serial Port
- Ethernet Port for management
- USB

48x1GE SFP

4 SFP+ Uplink ports



Pluggable and speed-tunable fans

AC/DC replaceable dual power supply



- **Built with IP Infusion architecture**
  
- **Include 2 software options (License management)**
  - **IP Base** - Complete layer 2 and access layer 3 switching features
  - **IP Service** - Complete layer 3 and metro layer 2 switching features





# Centec Switch Software – 2 Options



IP Base	IP Services
L2 Switching/VLAN/Vlan Classification	<i>IP Base +</i>
Static Link Aggregation/LACP STP&RSTP&MSTP/Smart Link/MLAG	OSPF/Route Map/ BPR/ VRF/BFD for Static Route&OSPF
IGMP Snooping v1&v2&v3	IGMP v1&v2&v3/PIM-SM&SSM
Static IPv4 Routing/RIPv1&v2/VRRP	QinQ/ERPS/G.8031/G.8032/EFM/CFM/Y.1731
ACL, QoS	
Storm Control/Port Security/DHCP Snooping/IP Source Guard/ARP Inspection/ CPU Storm Protection/ 802.1x/ Radius	
Telnet/TFTP/NTP/SSH/DNS/SNMPv1&v2&v3/RMON/Port&Vlan Mirror/sFlow	

**Notes:** Features remarked with “\*” are roadmap



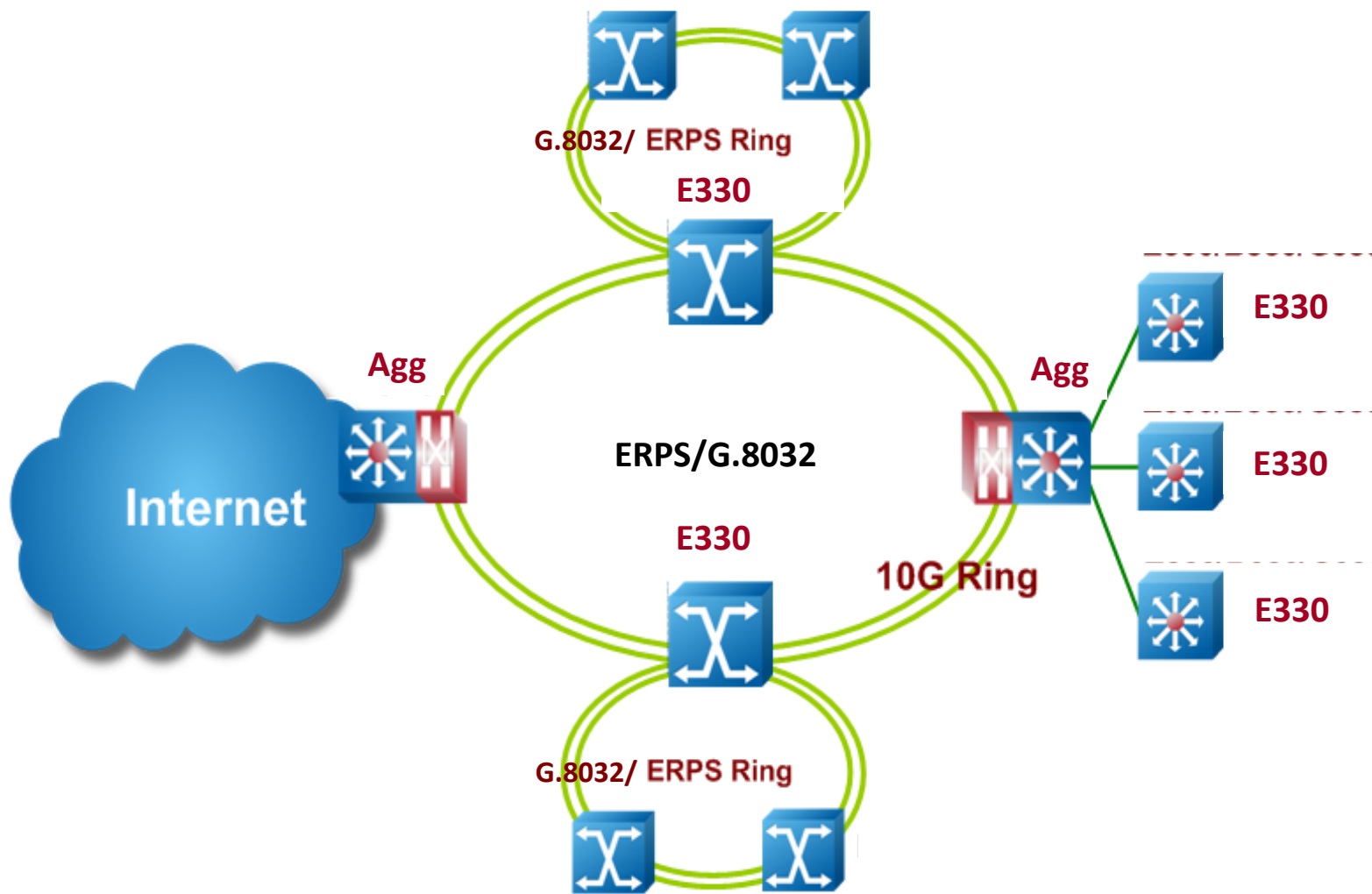


- Centec Product Introduction: Silicon & E330
- E330 Product Details
- **E330 Application Scenario**



# Metro L2 Ring Network Application

- **Related Features:** VLAN/QinQ, ERPS, G.8032, EFM/CFM, QoS etc.





**centec**  
networks

Your Trusted Technology Partner

[sales@centecnetworks.com](mailto:sales@centecnetworks.com)