

CSE 101 2-15-24

11

- 
- Pay: ext. 1 last day, to Fri. 10PM

## & in C++

- bitwise and (C/C++)
- address-of (C/C++)
- reference operator (C++ only)

operator on Rhs of a type

typed

refers to corresponding reference  
type.

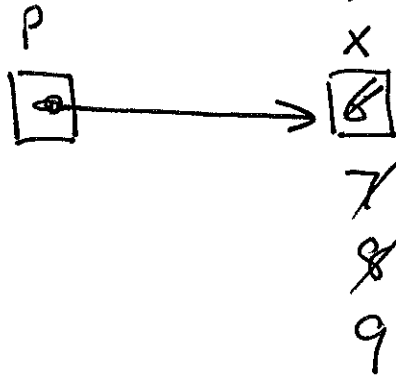
'reference' means 'alias'

like a pointer, but no need to de-reference.

EX,

```
int x;
int* p = &x;
int& r = x;
```

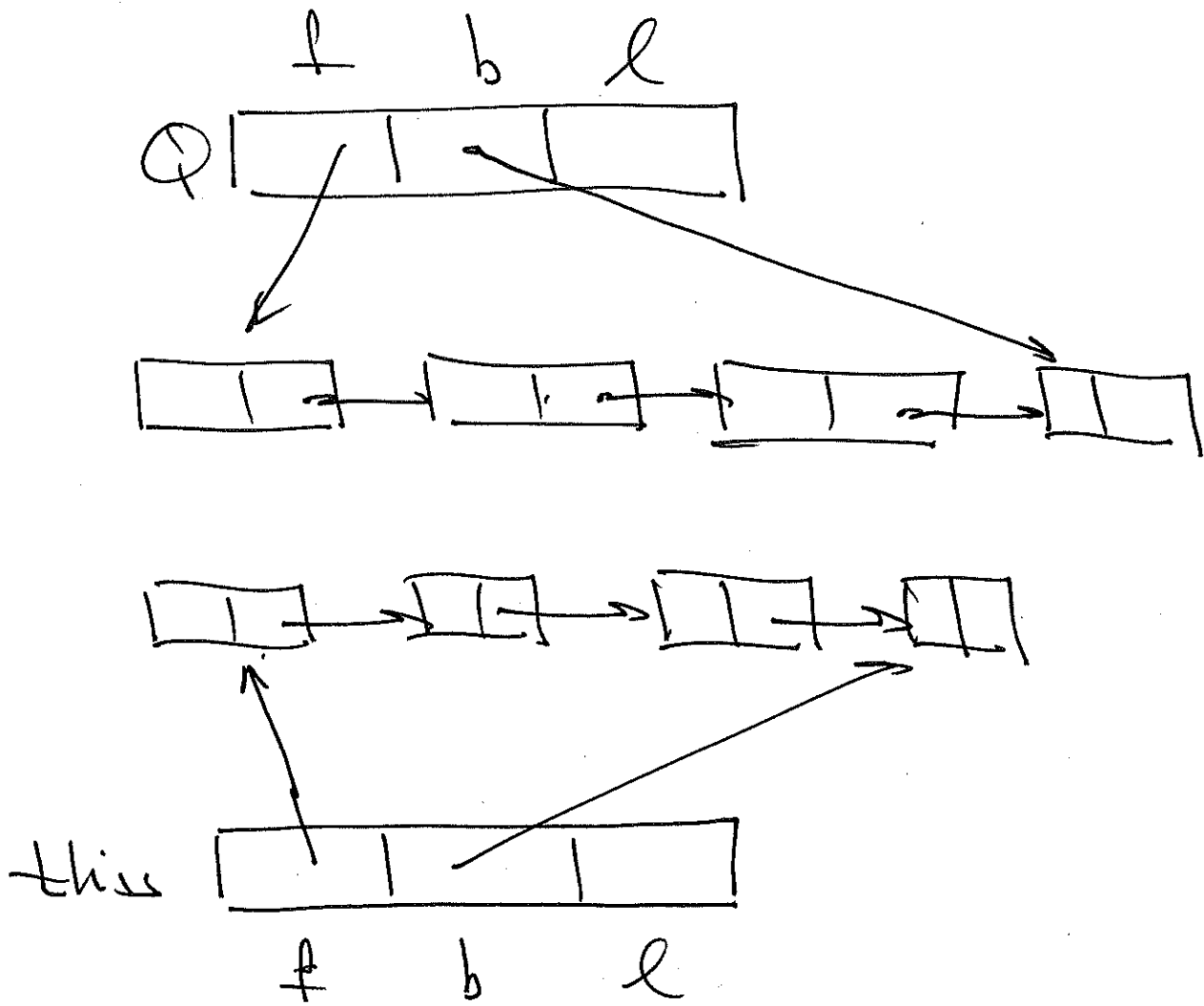
address-of stack memory



```
x = 6;
x++;
(*p)++;
r++;
```



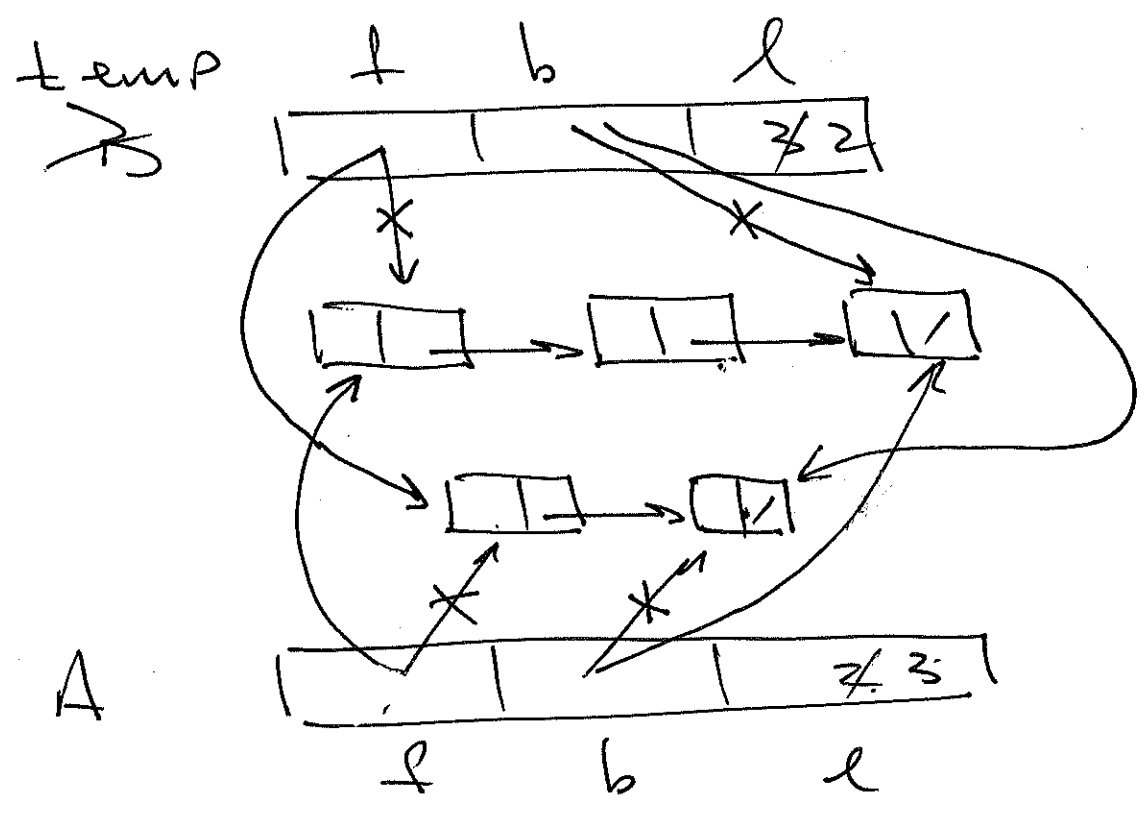
copy constructor :



Assignment operator :

$$A = (B = C)$$

$$A = B;$$



Queue  $A = B;$  // calls copy const.

$A = B;$  // calls assignment op.