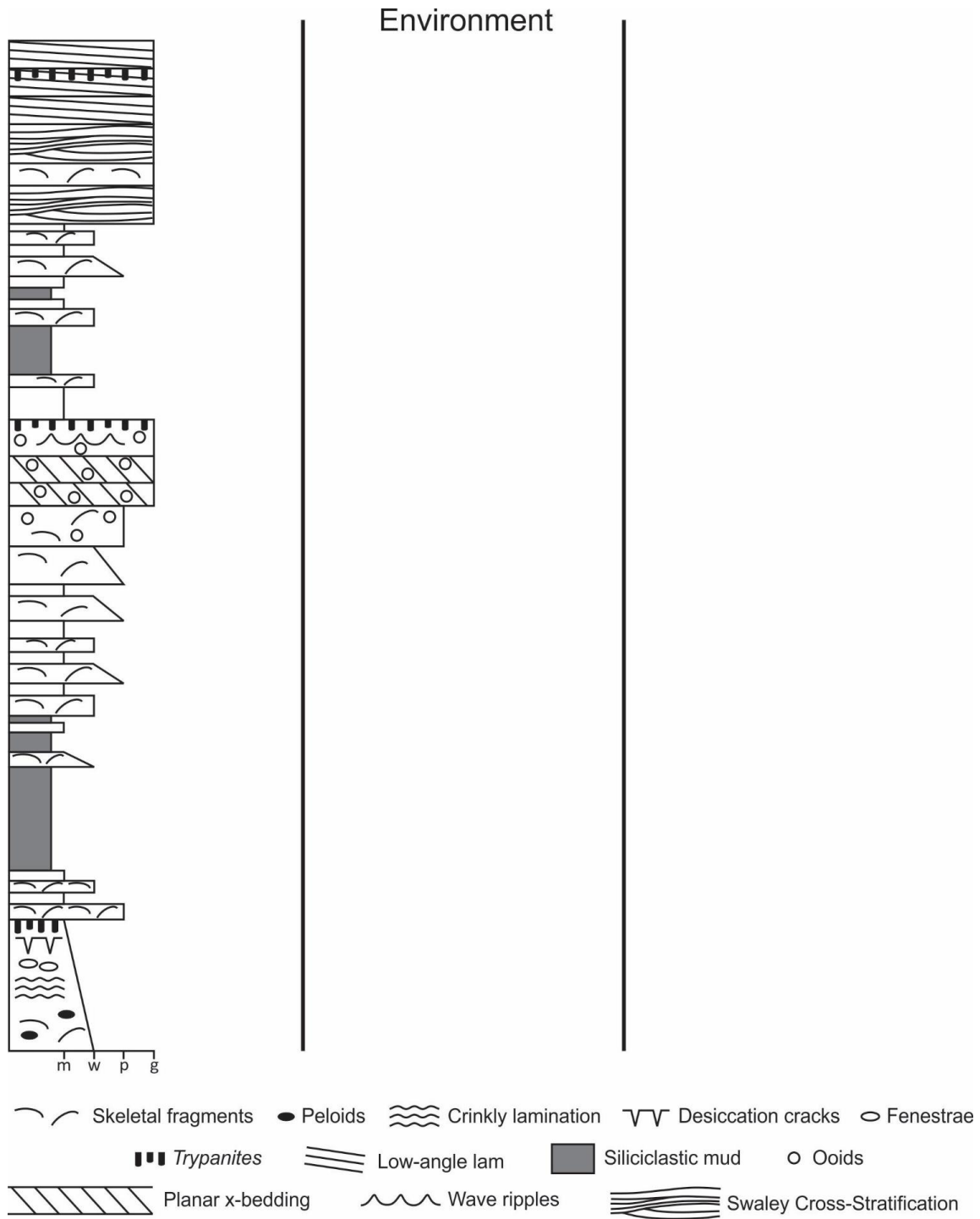


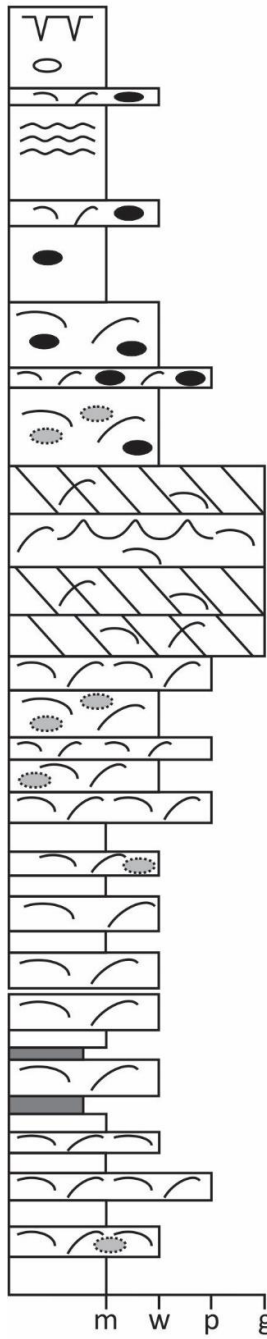
EART120: Carbonate ramps

Name: _____

Interpret the carbonate ramp environments (offshore, deep subtidal, shallow subtidal, peritidal). Carbonates are influenced by base level changes, and you will probably recognize shallowing and deepening-upwards successions, but autocyclic processes and other quirks of the carbonate system make sequence stratigraphy more difficult to apply. It can be done, but we don't have time, so we're going to skip it.



Environment



- Fenestrae
- Peloids
- Trypanites
- Siliciclastic mud
- Planar x-bedding
- Crinkly lamination
- Wave ripples
- Skeletal fragments
- Ooids
- Micritic envelopes
- Desiccation cracks