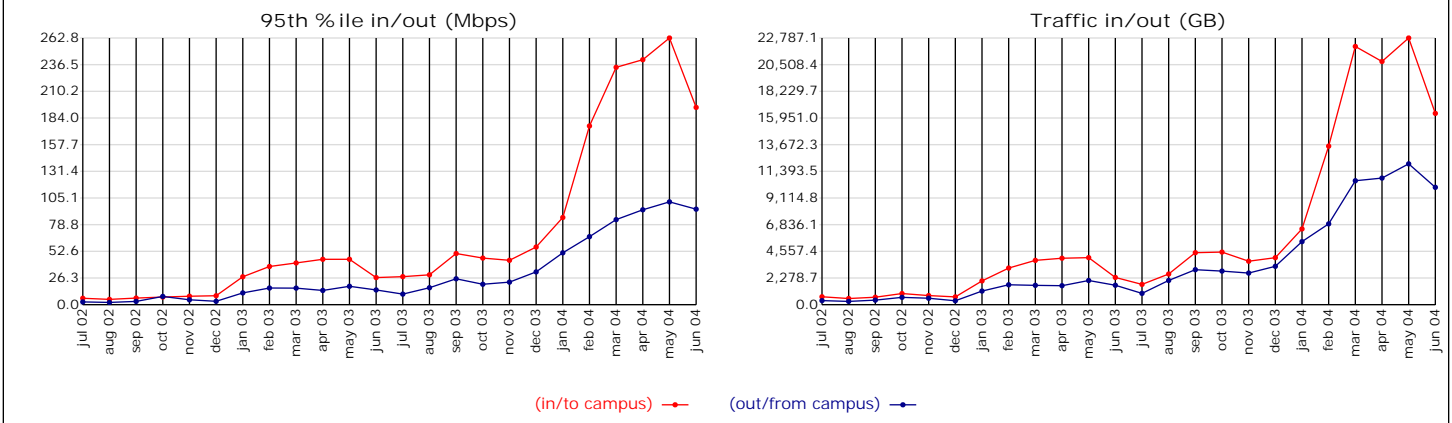


California Community Colleges ISP Usage for June 2004

24 Month Historical Usage Graphs

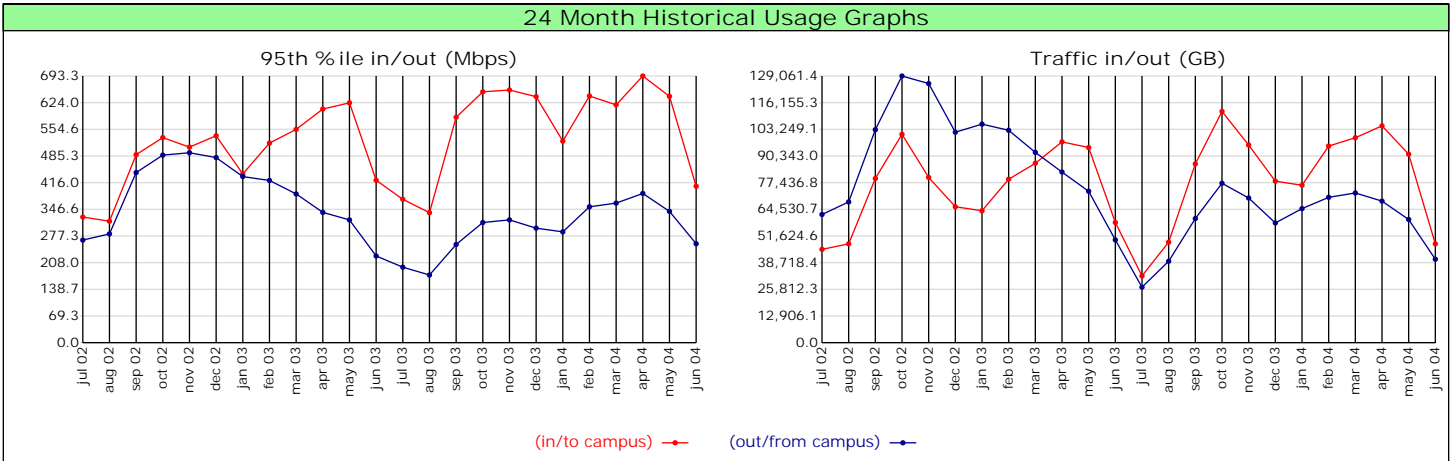


ASN Site Name	Last Year				This Year				Last Yr Billed	This Yr Billed	Change
	95th in	95th out	GB in	GB out	95th in	95th out	GB in	GB out			
10867 Foothill-DeAnza Community College	0.0	0.0	0.0	1.4	8.8	1.9	789.4	253.7	0.0	8.8	n/a
64667 Merced Community College	n/a	n/a	n/a	n/a	1.5	8.6	131.8	388.4	n/a	8.6	n/a
64528 San Diego Community College District	6.2	2.2	644.1	286.1	7.7	2.4	792.9	319.0	6.2	7.7	24.2%
64597 San Mateo County Community College	n/a	n/a	n/a	n/a	7.6	2.8	717.5	396.3	n/a	7.6	n/a
64555 El Camino Community College	n/a	n/a	n/a	n/a	7.1	5.2	516.5	541.7	n/a	7.1	n/a
64536 Cerritos Community College	n/a	n/a	n/a	n/a	7.0	1.4	569.6	206.0	n/a	7.0	n/a
64592 Riverside Community College	n/a	n/a	n/a	n/a	5.8	0.8	420.8	90.9	n/a	5.8	n/a
64540 City College of San Francisco	n/a	n/a	n/a	n/a	5.5	1.3	476.1	189.9	n/a	5.5	n/a
64576 Los Rios Community College District	n/a	n/a	n/a	n/a	5.4	1.8	515.0	246.9	n/a	5.4	n/a
64566 Long Beach City College	n/a	n/a	n/a	n/a	5.3	1.8	489.3	203.8	n/a	5.3	n/a
10294 Coast Community College District	2.9	2.9	259.9	285.5	5.3	2.9	476.2	324.6	2.9	5.3	82.8%
64598 Santa Ana Community College	n/a	n/a	n/a	n/a	5.2	1.5	480.7	170.7	n/a	5.2	n/a
64595 San Joaquin Delta Community College	n/a	n/a	n/a	n/a	3.1	4.8	294.2	928.4	n/a	4.8	n/a
64522 East Los Angeles Community College	2.5	1.5	244.4	190.9	4.7	4.6	449.2	573.6	2.5	4.7	88.0%
64525 Kern Community College District	3.8	0.7	276.4	91.6	4.7	1.0	371.2	137.7	3.8	4.7	23.7%
64519 Butte Community College	2.1	3.5	192.4	363.0	3.1	4.6	278.0	364.8	3.5	4.6	31.4%
64604 Southwestern Community College	n/a	n/a	n/a	n/a	4.1	1.5	321.8	141.4	n/a	4.1	n/a
64557 Fullerton Community College	n/a	n/a	n/a	n/a	3.1	3.7	272.8	313.8	n/a	3.7	n/a
6492 Palomar Community College	n/a	n/a	n/a	n/a	3.7	2.2	331.8	325.7	n/a	3.7	n/a
64613 Yosemite Community College District	n/a	n/a	n/a	n/a	3.5	2.2	325.3	279.6	n/a	3.5	n/a
23323 Diablo Valley Community College	2.9	2.3	208.7	213.0	2.7	3.5	218.2	342.5	2.9	3.5	20.7%
64605 State Center Community College District	n/a	n/a	n/a	n/a	3.4	0.7	281.8	92.6	n/a	3.4	n/a
64600 Santa Monica Community College	n/a	n/a	n/a	n/a	3.2	0.2	265.3	17.7	n/a	3.2	n/a
64560 Grossmont Cuyamaca Community College	n/a	n/a	n/a	n/a	3.0	2.3	273.5	173.9	n/a	3.0	n/a
22101 Santa Rosa Jr. Community College	2.1	0.6	186.6	73.2	2.9	0.9	253.1	122.0	2.1	2.9	38.1%
64581 Mt. San Antonio Community College	n/a	n/a	n/a	n/a	2.9	1.1	252.7	134.5	n/a	2.9	n/a
64596 San Jose Evergreen Community College	n/a	n/a	n/a	n/a	2.8	1.7	235.1	192.7	n/a	2.8	n/a
64533 Antelope Valley Community College	n/a	n/a	n/a	n/a	2.7	1.0	237.9	123.1	n/a	2.7	n/a
64520 Cabrillo Community College	1.8	0.5	149.7	118.7	2.5	1.8	194.8	145.7	1.8	2.5	38.9%
64579 Mira Costa Community College	n/a	n/a	n/a	n/a	2.5	0.5	188.0	57.0	n/a	2.5	n/a
64612 West Valley Mission Community College	n/a	n/a	n/a	n/a	2.2	2.3	202.9	144.6	n/a	2.3	n/a
64538 Chaffey Community College	n/a	n/a	n/a	n/a	2.2	0.6	174.7	68.9	n/a	2.2	n/a
64521 Sequoia Community College	1.8	0.3	120.9	25.9	2.1	0.9	161.6	74.8	1.8	2.1	16.7%
64539 Citrus Community College	n/a	n/a	n/a	n/a	2.1	0.2	172.9	14.9	n/a	2.1	n/a
64585 Ohlone Community College	n/a	n/a	n/a	n/a	2.1	1.0	128.2	109.1	n/a	2.1	n/a
64594 Sierra Joint Community College District	n/a	n/a	n/a	n/a	2.0	1.1	176.8	99.3	n/a	2.0	n/a
64599 Santa Barbara Community College	n/a	n/a	n/a	n/a	2.0	0.4	177.0	49.5	n/a	2.0	n/a
64537 Chabot Community College District	n/a	n/a	n/a	n/a	1.9	0.7	163.7	91.4	n/a	1.9	n/a
64559 Glendale Community College	n/a	n/a	n/a	n/a	1.9	0.2	159.4	23.4	n/a	1.9	n/a
64664 Monterey Peninsula Community College	n/a	n/a	n/a	n/a	1.9	0.0	138.8	0.6	n/a	1.9	n/a
64545 College of the Canyons	n/a	n/a	n/a	n/a	1.9	1.3	163.7	117.5	n/a	1.9	n/a
64591 Rio Hondo Community College	n/a	n/a	n/a	n/a	1.8	0.5	123.8	32.3	n/a	1.8	n/a
64530 Golden West Community College	n/a	n/a	n/a	n/a	1.8	0.2	138.2	20.6	n/a	1.8	n/a
64532 Allan Hancock Community College	n/a	n/a	n/a	n/a	1.7	0.4	127.3	41.5	n/a	1.7	n/a

California Community Colleges (continued)

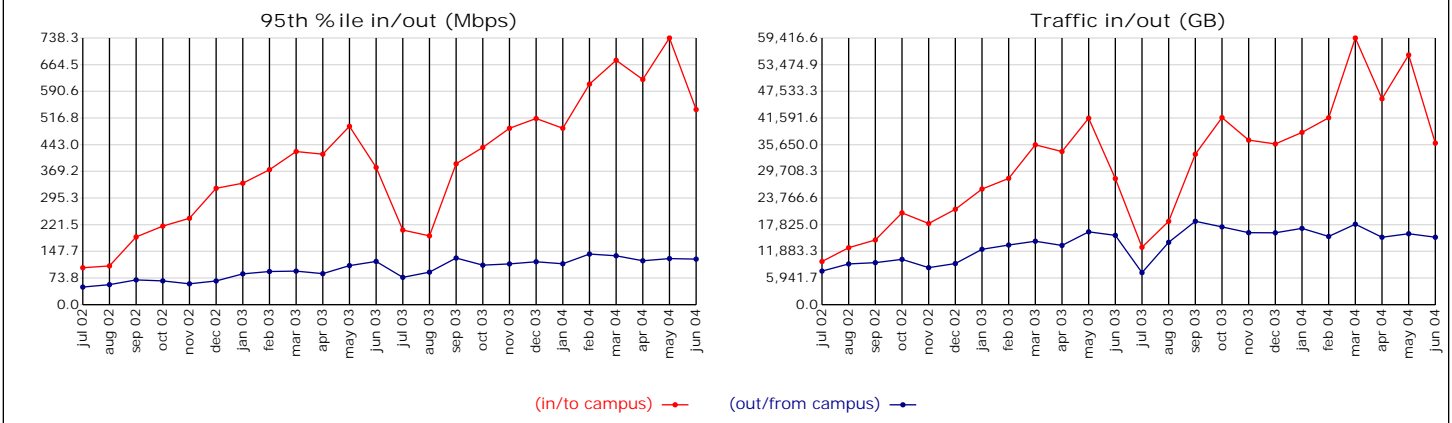
Detailed Site Usage for June 2004 (continued)												
ASN	Site Name	Last Year				This Year				Last Yr	This Yr	Change
		95th in	95th out	GB in	GB out	95th in	95th out	GB in	GB out	Billed	Billed	
64552	Cypress Community College	n/a	n/a	n/a	n/a	1.7	0.4	144.0	54.5	n/a	1.7	n/a
64571	Los Angeles Pierce Community College	n/a	n/a	n/a	n/a	1.5	0.5	103.6	62.2	n/a	1.5	n/a
64549	Copper Mountain Community College	n/a	n/a	n/a	n/a	0.3	1.5	23.4	93.6	n/a	1.5	n/a
64524	Hartnell Community College	0.0	0.0	0.0	0.0	1.4	0.2	108.5	27.5	0.0	1.4	n/a
64611	West Los Angeles Community College	n/a	n/a	n/a	n/a	1.4	0.4	96.9	37.8	n/a	1.4	n/a
64606	Taft CC	n/a	n/a	n/a	n/a	1.4	0.2	119.9	23.4	n/a	1.4	n/a
64607	Ventura Community College	n/a	n/a	n/a	n/a	1.4	0.2	111.1	19.4	n/a	1.4	n/a
64573	Los Angeles Trade Tech Community College	n/a	n/a	n/a	n/a	1.4	0.2	99.6	23.4	n/a	1.4	n/a
64582	Mt. San Jacinto Community College	n/a	n/a	n/a	n/a	1.4	0.6	128.1	84.8	n/a	1.4	n/a
64584	North Orange County Community College District	n/a	n/a	n/a	n/a	1.2	0.2	97.5	24.4	n/a	1.2	n/a
64567	Los Angeles Community College District	n/a	n/a	n/a	n/a	1.2	0.9	109.4	112.8	n/a	1.2	n/a
64614	Yuba Community College	n/a	n/a	n/a	n/a	1.2	0.9	95.9	70.6	n/a	1.2	n/a
64593	San Bernardino Valley Community College	n/a	n/a	n/a	n/a	1.2	0.8	82.2	75.5	n/a	1.2	n/a
64551	Cuesta Community College	n/a	n/a	n/a	n/a	1.2	0.3	80.8	33.6	n/a	1.2	n/a
64542	College of the Redwoods	n/a	n/a	n/a	n/a	1.2	0.3	96.3	40.8	n/a	1.2	n/a
64583	Napa Valley Community College	n/a	n/a	n/a	n/a	1.1	0.3	82.3	33.6	n/a	1.1	n/a
64698	Victor Valley Community College	n/a	n/a	n/a	n/a	1.1	0.4	81.7	48.7	n/a	1.1	n/a
64572	Los Angeles Southwest Community College	n/a	n/a	n/a	n/a	1.1	1.1	80.6	68.5	n/a	1.1	n/a
64563	Irvine Valley Community College	n/a	n/a	n/a	n/a	1.1	0.2	83.1	21.7	n/a	1.1	n/a
64526	Laney Community College	0.4	0.0	21.5	1.6	1.1	0.1	48.5	5.7	0.4	1.1	175.0%
64610	West Hills Community College	n/a	n/a	n/a	n/a	1.0	0.8	81.5	78.9	n/a	1.0	n/a
64712	Shasta Community College	n/a	n/a	n/a	n/a	1.0	0.4	75.7	45.2	n/a	1.0	n/a
64603	Solano Community College	n/a	n/a	n/a	n/a	0.9	0.2	72.7	27.2	n/a	0.9	n/a
64574	Los Angeles Valley Community College	n/a	n/a	n/a	n/a	0.9	0.3	79.5	42.4	n/a	0.9	n/a
64586	Oxnard Community College	n/a	n/a	n/a	n/a	0.8	0.1	53.8	9.3	n/a	0.8	n/a
64564	Lake Tahoe Community College	n/a	n/a	n/a	n/a	0.7	0.1	63.8	10.8	n/a	0.7	n/a
64550	Crafton Hills Community College	n/a	n/a	n/a	n/a	0.7	0.1	40.5	3.7	n/a	0.7	n/a
64546	Compton Community College	n/a	n/a	n/a	n/a	0.7	0.3	22.2	10.7	n/a	0.7	n/a
64575	Los Medanos Community College	n/a	n/a	n/a	n/a	0.7	0.2	37.4	23.0	n/a	0.7	n/a
64570	Los Angeles Mission Community College	n/a	n/a	n/a	n/a	0.6	0.1	38.7	17.0	n/a	0.6	n/a
64562	Indian Valley Community College	n/a	n/a	n/a	n/a	0.6	0.2	43.7	11.0	n/a	0.6	n/a
64577	Mendocino Community College	n/a	n/a	n/a	n/a	0.5	0.1	34.1	9.0	n/a	0.5	n/a
64544	College of the Siskiyous	n/a	n/a	n/a	n/a	0.4	0.2	28.3	17.5	n/a	0.4	n/a
64587	Palo Verde Community College	n/a	n/a	n/a	n/a	0.4	0.1	24.2	6.2	n/a	0.4	n/a
64534	Barstow Community College	n/a	n/a	n/a	n/a	0.3	0.1	21.6	4.8	n/a	0.3	n/a
64565	Lassen Community College	n/a	n/a	n/a	n/a	0.3	0.0	30.2	3.2	n/a	0.3	n/a
64547	Contra Costa Community College District	n/a	n/a	n/a	n/a	0.2	0.3	24.3	35.5	n/a	0.3	n/a
64523	Feather River Community College	0.2	0.0	18.8	4.9	0.3	0.1	28.2	7.4	0.2	0.3	50.0%
64627	San Bernardino Community College District	n/a	n/a	n/a	n/a	0.2	0.0	15.4	1.4	n/a	0.2	n/a
64535	CCC Chancellor's Office	n/a	n/a	n/a	n/a	0.1	0.0	10.0	4.1	n/a	0.1	n/a
64580	Moorpark Community College	n/a	n/a	n/a	n/a	0.1	0.1	7.4	2.7	n/a	0.1	n/a
64569	Los Angeles Harbor Community College	n/a	n/a	n/a	n/a	0.0	0.1	6.7	2.3	n/a	0.1	n/a
64561	Imperial Valley Community College	n/a	n/a	n/a	n/a	0.0	0.0	0.0	0.0	n/a	0.0	n/a
64590	Peralta Community College District	n/a	n/a	n/a	n/a	0.0	0.0	0.0	0.0	n/a	0.0	n/a
64601	Santa Rosa Jr. Community College	n/a	n/a	n/a	n/a	0.0	0.0	0.0	0.7	n/a	0.0	n/a
64602	Shasta Trinity Community College	n/a	n/a	n/a	n/a	0.0	0.0	0.0	0.0	n/a	0.0	n/a
64554	Diablo Valley Community College	n/a	n/a	n/a	n/a	0.0	0.0	0.0	0.0	n/a	0.0	n/a
64548	Contra Costa Community College	n/a	n/a	n/a	n/a	0.0	0.0	0.0	0.0	n/a	0.0	n/a
64657	College of the Sequoias	n/a	n/a	n/a	n/a	0.0	0.0	0.0	0.0	n/a	0.0	n/a
64558	Gavilan Joint Community College District	n/a	n/a	n/a	n/a	0.0	0.0	0.0	0.0	n/a	0.0	n/a
64553	De Anza Community College	n/a	n/a	n/a	n/a	0.0	0.0	0.0	0.0	n/a	0.0	n/a
64589	Pasadena Area Community College	n/a	n/a	n/a	n/a	0.0	0.0	0.0	0.0	n/a	0.0	n/a
64609	Vista Community College	n/a	n/a	n/a	n/a	0.0	0.0	0.0	0.0	n/a	0.0	n/a
64578	Merritt Community College	n/a	n/a	n/a	n/a	0.0	0.0	0.0	0.0	n/a	0.0	n/a
64720	Cuyamaca Community College	n/a	n/a	n/a	n/a	0.0	0.0	0.0	0.0	n/a	0.0	n/a
64568	Los Angeles City Community College	n/a	n/a	n/a	n/a	0.0	0.0	0.0	0.0	n/a	0.0	n/a
26492	Ventura County Community College District	0.0	0.0	3.1	2.7	0.0	0.0	2.1	1.7	0.0	0.0	n/a
TOTALS		26.7	14.5	2,326.5	1,658.5	194.4	94.1	16,344.9	10,025.2	28.1	207.6	638.8%

California State University ISP Usage for June 2004



Detailed Site Usage for June 2004 (sorted by Billed Usage)											
ASN Site Name	Last Year				This Year				Last Yr Billed	This Yr Billed	Change
	95th in	95th out	GB in	GB out	95th in	95th out	GB in	GB out			
2150 4CNet	422.3	225.4	58,162.5	49,742.9	102.2	52.6	13,046.4	9,218.8	422.3	102.2	-75.8%
64674 Cal Poly San Luis Obispo	n/a	n/a	n/a	n/a	40.9	22.7	4,344.3	3,760.4	n/a	40.9	n/a
64713 Cal Poly Pomona	n/a	n/a	n/a	n/a	37.4	18.2	5,036.8	3,276.3	n/a	37.4	n/a
2152 4CNet	0.0	0.0	0.3	0.0	31.8	7.2	2,123.6	901.9	0.0	31.8	n/a
64688 CSU Dominguez Hills	n/a	n/a	n/a	n/a	6.6	23.7	741.8	4,751.1	n/a	23.7	n/a
64685 CSU Long Beach	n/a	n/a	n/a	n/a	19.8	6.2	2,266.0	1,077.6	n/a	19.8	n/a
64691 CSU Northridge	n/a	n/a	n/a	n/a	19.7	15.1	2,481.7	3,121.5	n/a	19.7	n/a
64684 CSU Fresno	n/a	n/a	n/a	n/a	16.6	13.3	2,603.3	2,083.0	n/a	16.6	n/a
64689 CSU Fullerton	n/a	n/a	n/a	n/a	16.2	15.3	1,880.0	1,971.0	n/a	16.2	n/a
64683 CSU Sacramento	n/a	n/a	n/a	n/a	14.9	7.9	715.7	465.1	n/a	14.9	n/a
64673 CSU Monterey Bay	n/a	n/a	n/a	n/a	12.3	12.6	2,153.3	2,175.6	n/a	12.6	n/a
64687 CSU San Bernardino	n/a	n/a	n/a	n/a	12.1	8.6	1,357.1	912.2	n/a	12.1	n/a
64682 CSU Chico	n/a	n/a	n/a	n/a	10.6	5.8	1,263.8	1,007.6	n/a	10.6	n/a
64517 WestEd	0.0	0.0	0.0	0.0	9.9	3.5	2,083.7	547.2	0.0	9.9	n/a
64694 San Diego State University	n/a	n/a	n/a	n/a	8.5	7.7	485.7	444.1	n/a	8.5	n/a
64690 CSU Los Angeles	n/a	n/a	n/a	n/a	8.2	2.3	879.7	361.4	n/a	8.2	n/a
64697 CSU Stanislaus	n/a	n/a	n/a	n/a	5.5	7.9	712.6	1,065.3	n/a	7.9	n/a
64709 Sonoma State University	n/a	n/a	n/a	n/a	7.7	7.9	777.4	987.1	n/a	7.9	n/a
64696 CSU Bakersfield	n/a	n/a	n/a	n/a	6.9	5.0	771.9	506.3	n/a	6.9	n/a
64695 CSU San Marcos	n/a	n/a	n/a	n/a	6.6	3.6	802.8	660.1	n/a	6.6	n/a
64708 Humboldt State University	n/a	n/a	n/a	n/a	5.1	3.8	632.9	404.8	n/a	5.1	n/a
64692 CSU Chancellor's Office	n/a	n/a	n/a	n/a	2.5	1.0	204.1	107.2	n/a	2.5	n/a
64512 CMS (Salt Lake City)	n/a	n/a	n/a	n/a	0.4	2.5	57.5	343.4	n/a	2.5	n/a
64686 California Maritime Academy	n/a	n/a	n/a	n/a	1.4	2.3	152.7	173.0	n/a	2.3	n/a
64693 CSU Channel Islands	n/a	n/a	n/a	n/a	2.2	0.4	196.2	43.8	n/a	2.2	n/a
64710 Moss Landing Marine Lab	n/a	n/a	n/a	n/a	0.4	0.1	36.0	11.1	n/a	0.4	n/a
64515 Palm Desert Center	n/a	n/a	n/a	n/a	0.2	0.0	15.4	1.1	n/a	0.2	n/a
64706 HR-ISA	n/a	n/a	n/a	n/a	0.1	0.0	3.0	0.2	n/a	0.1	n/a
64681 San Jose State University	n/a	n/a	n/a	n/a	0.0	0.0	0.0	0.0	n/a	0.0	n/a
64679 CSU Hayward	n/a	n/a	n/a	n/a	0.0	0.0	0.0	0.0	n/a	0.0	n/a
64680 San Francisco State University	n/a	n/a	n/a	n/a	0.0	0.0	0.0	0.0	n/a	0.0	n/a
64707 CSUCO Government Affairs	n/a	n/a	n/a	n/a	0.0	0.0	0.0	0.0	n/a	0.0	n/a
TOTALS	422.3	225.4	58,162.8	49,742.9	406.7	257.2	47,825.4	40,378.2	422.3	429.7	1.8%

24 Month Historical Usage Graphs



Detailed Site Usage for June 2004 (sorted by Billed Usage)

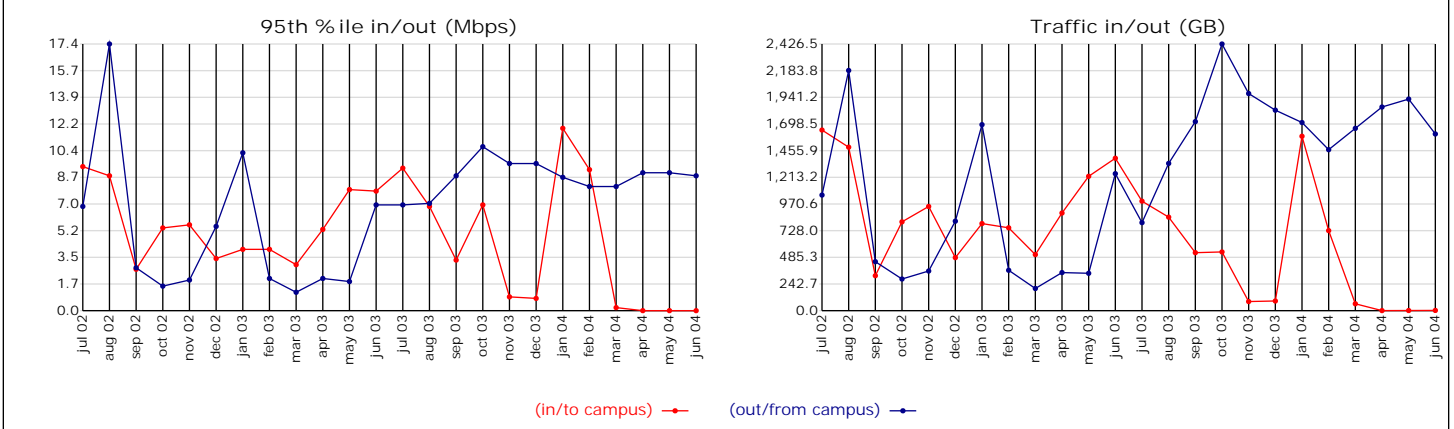
ASN Site Name	Last Year				This Year				Last Yr Billed	This Yr Billed	Change
	95th in	95th out	GB in	GB out	95th in	95th out	GB in	GB out			
30193 Los Angeles Unified School District	n/a	n/a	n/a	n/a	75.9	9.5	5,354.2	976.5	n/a	75.9	n/a
23024 Orange County Department of Education	42.2	9.2	2,297.2	1,371.2	62.2	6.4	3,584.4	555.4	42.2	62.2	47.4%
2920 Los Angeles County Office of Education	20.2	9.9	1,353.1	1,540.6	36.9	7.2	2,511.3	1,035.4	20.2	36.9	82.7%
64650 Sacramento County Office of Education	n/a	n/a	n/a	n/a	34.7	5.8	1,921.9	605.9	n/a	34.7	n/a
18558 Riverside County Office of Education	23.1	8.2	1,544.4	1,200.1	27.4	3.5	1,560.3	440.1	23.1	27.4	18.6%
6099 Alameda County Office of Education	16.7	3.4	1,029.0	494.0	22.5	10.9	1,434.7	1,995.9	16.7	22.5	34.7%
22315 San Bernardino County Superintendent of Schools	51.5	6.0	2,593.6	571.4	21.7	2.7	1,105.5	306.5	51.5	21.7	-57.9%
3734 Santa Clara County Office of Education	15.0	7.7	1,144.3	1,015.2	21.0	5.5	1,600.4	921.7	15.0	21.0	40.0%
23309 Contra Costa County Office of Education	19.3	23.9	1,041.2	1,220.6	19.8	3.2	1,082.1	398.5	23.9	19.8	-17.2%
64514 Ventura County Office of Education	0.0	0.0	0.0	0.0	15.1	3.0	1,151.6	417.5	0.0	15.1	n/a
26066 Napa Valley USD	1.6	0.3	113.7	25.0	4.8	14.4	375.4	1,139.1	1.6	14.4	800.0%
64672 Imperial County Office of Education	n/a	n/a	n/a	n/a	13.3	2.3	1,218.6	298.9	n/a	13.3	n/a
21694 Fresno County Office of Education	8.3	3.3	618.1	563.4	11.2	4.9	947.7	697.1	8.3	11.2	34.9%
21828 Tulare County Office of Education	7.8	4.3	676.3	520.8	10.5	6.0	804.4	805.2	7.8	10.5	34.6%
64637 San Mateo County Office of Education	n/a	n/a	n/a	n/a	9.8	3.9	600.5	390.2	n/a	9.8	n/a
22226 San Francisco County Office of Education	3.8	0.9	294.2	96.7	9.8	1.4	507.8	157.8	3.8	9.8	157.9%
14213 Monterey County Office of Education	10.3	1.5	612.3	151.9	9.5	1.0	574.7	101.2	10.3	9.5	-7.8%
64700 San Luis Obispo County Office of Education	n/a	n/a	n/a	n/a	8.6	0.7	435.8	54.0	n/a	8.6	n/a
14212 Santa Cruz County Office of Education	6.2	1.2	519.5	200.8	8.1	3.2	548.3	450.1	6.2	8.1	30.6%
64624 Pomona Unified School District	n/a	n/a	n/a	n/a	6.4	0.5	302.1	27.9	n/a	6.4	n/a
64701 Santa Barbara County Office of Education	n/a	n/a	n/a	n/a	6.0	0.7	550.5	99.1	n/a	6.0	n/a
21545 Kings County Office of Education	5.4	2.0	598.4	242.1	5.9	3.0	640.5	268.7	5.4	5.9	9.3%
5783 Kern County Office of Education	1.5	0.5	129.7	47.0	5.9	0.1	547.7	7.1	1.5	5.9	293.3%
23483 Shasta County Office of Education	5.3	2.1	537.2	306.4	5.3	3.2	614.5	475.2	5.3	5.3	0.0%
64632 Mendocino County Office of Education	n/a	n/a	n/a	n/a	5.3	2.9	339.5	238.9	n/a	5.3	n/a
23489 Marin County Office of Education	0.0	0.0	0.4	0.0	5.0	0.6	287.3	54.7	0.0	5.0	n/a
21708 San Diego County Office of Education	1.3	0.4	101.1	34.1	4.8	2.3	326.6	309.2	1.3	4.8	269.2%
23369 Sonoma County Office of Education	4.7	0.7	232.8	51.1	4.3	0.6	235.7	43.2	4.7	4.3	-8.5%
21915 Merced County Office of Education	0.4	0.1	30.1	8.8	4.3	0.7	352.5	68.7	0.4	4.3	975.0%
64531 Monrovia Unified School District	n/a	n/a	n/a	n/a	4.0	2.0	378.3	285.8	n/a	4.0	n/a
64644 Butte County Office of Education	n/a	n/a	n/a	n/a	3.9	1.1	354.6	185.5	n/a	3.9	n/a
64665 San Benito County Office of Education	n/a	n/a	n/a	n/a	3.8	0.8	228.4	80.7	n/a	3.8	n/a
64513 Stanislaus County Office of Education	0.0	0.0	0.0	0.0	3.5	0.2	282.2	12.5	0.0	3.5	n/a
13940 San Jose County Office of Education	0.7	0.5	53.1	66.9	3.4	0.6	300.2	75.9	0.7	3.4	385.7%
64654 Yolo County Office of Education	n/a	n/a	n/a	n/a	3.2	0.3	184.3	27.5	n/a	3.2	n/a
25664 Solano County Office of Education	5.0	0.7	245.0	55.6	3.1	0.4	159.4	29.9	5.0	3.1	-38.0%
64516 Placer County Office of Education	2.4	0.5	207.1	42.6	3.0	0.8	247.1	65.9	2.4	3.0	25.0%
27009 Clovis Unified School District	0.2	0.5	20.7	70.1	3.0	1.6	237.5	269.9	0.5	3.0	500.0%
64617 Lake County Office of Education	n/a	n/a	n/a	n/a	2.9	0.3	151.2	19.8	n/a	2.9	n/a
64639 Red Bluff High School District	n/a	n/a	n/a	n/a	2.6	0.3	150.0	24.9	n/a	2.6	n/a
64641 Siskiyou County Office of Education	n/a	n/a	n/a	n/a	2.6	0.5	135.5	35.0	n/a	2.6	n/a
64714 Torrance Unified School District	n/a	n/a	n/a	n/a	2.1	0.3	105.4	18.0	n/a	2.1	n/a
26403 Madera County Office of Education	1.7	0.3	127.0	24.8	2.0	0.7	151.8	53.2	1.7	2.0	17.6%
64622 Bishop Union Elementary School District	n/a	n/a	n/a	n/a	0.9	1.9	67.8	132.5	n/a	1.9	n/a

Digital California Project (continued)

Detailed Site Usage for June 2004 (continued)											
ASN Site Name	Last Year				This Year				Last Yr	This Yr	Change
	95th in	95th out	GB in	GB out	95th in	95th out	GB in	GB out	Billed	Billed	
64676 Truckee USD	n/a	n/a	n/a	n/a	1.8	0.0	83.2	0.1	n/a	1.8	n/a
64635 Humboldt County Office of Education	n/a	n/a	n/a	n/a	1.7	0.2	103.4	32.0	n/a	1.7	n/a
64640 Glenn County Office of Education	n/a	n/a	n/a	n/a	1.6	0.7	127.4	35.9	n/a	1.6	n/a
64699 Calaveras County Office of Education	n/a	n/a	n/a	n/a	1.5	0.2	111.9	24.5	n/a	1.5	n/a
64675 Del Norte County Office of Education	n/a	n/a	n/a	n/a	1.5	0.2	79.4	11.7	n/a	1.5	n/a
64646 El Dorado County Office of Education	n/a	n/a	n/a	n/a	1.4	0.2	107.6	18.2	n/a	1.4	n/a
64652 Lake Tahoe Unified School District	n/a	n/a	n/a	n/a	1.3	0.3	77.2	16.5	n/a	1.3	n/a
64642 Lassen County Office of Education	n/a	n/a	n/a	n/a	1.0	0.7	54.5	49.4	n/a	1.0	n/a
64615 Whittier Union High School District	n/a	n/a	n/a	n/a	0.9	0.1	45.4	9.6	n/a	0.9	n/a
64666 Amador County Office of Education	n/a	n/a	n/a	n/a	0.9	0.1	64.9	11.3	n/a	0.9	n/a
64631 Trinity County Office of Education	n/a	n/a	n/a	n/a	0.8	0.1	60.3	9.9	n/a	0.8	n/a
64648 Yuba County Office of Education	n/a	n/a	n/a	n/a	0.7	0.2	46.3	14.5	n/a	0.7	n/a
64653 Sutter County Office of Education	n/a	n/a	n/a	n/a	0.6	0.1	37.5	8.3	n/a	0.6	n/a
64669 Tuolumne County Office of Education	n/a	n/a	n/a	n/a	0.6	0.0	40.9	2.6	n/a	0.6	n/a
64649 Colusa County Office of Education	n/a	n/a	n/a	n/a	0.6	0.2	57.7	14.8	n/a	0.6	n/a
64702 Tulelake Basin Joint Unified School District	n/a	n/a	n/a	n/a	0.5	0.1	33.3	4.4	n/a	0.5	n/a
64656 Dos Palos High School	n/a	n/a	n/a	n/a	0.5	0.1	36.1	5.7	n/a	0.5	n/a
64711 Mammoth County Office of Education	n/a	n/a	n/a	n/a	0.5	0.1	44.6	14.4	n/a	0.5	n/a
64518 Plumas COE	0.0	0.0	1.6	0.5	0.5	0.1	27.8	10.1	0.0	0.5	n/a
64703 Modoc County Office of Education	n/a	n/a	n/a	n/a	0.3	0.4	21.5	23.2	n/a	0.4	n/a
25900 Hemet Unified School District	0.0	0.0	1.3	1.5	0.3	0.0	16.7	0.2	0.0	0.3	n/a
27502 Chowchilla School Districts	n/a	n/a	n/a	n/a	0.3	0.0	19.8	38.0	n/a	0.3	n/a
64658 Mariposa County Office of Education	n/a	n/a	n/a	n/a	0.2	0.0	14.0	3.4	n/a	0.2	n/a
64651 Alpine County Office of Education	n/a	n/a	n/a	n/a	0.1	0.0	12.8	0.1	n/a	0.1	n/a
64647 Nevada Joint Union School District	n/a	n/a	n/a	n/a	0.1	0.1	6.2	5.6	n/a	0.1	n/a
2151 Digital California Project	122.6	30.9	11,835.9	5,456.1	0.0	0.0	2.3	0.3	122.6	0.0	-100.0%
64623 Murrieta	n/a	n/a	n/a	n/a	0.0	0.0	0.0	0.0	n/a	0.0	n/a
21786 San Mateo County Office of Education	0.0	0.0	0.0	0.0	n/a	n/a	n/a	n/a	0.0	n/a	n/a
64678 Sierra County Office of Education	n/a	n/a	n/a	n/a	0.0	0.0	2.3	0.9	n/a	0.0	n/a
64677 Loyalton High School	n/a	n/a	n/a	n/a	0.0	0.0	3.8	1.1	n/a	0.0	n/a
64626 Yucaipa	n/a	n/a	n/a	n/a	0.0	0.0	0.0	0.0	n/a	0.0	n/a
64629 Chaffey Joint Union High School District	n/a	n/a	n/a	n/a	0.0	0.0	0.0	0.0	n/a	0.0	n/a
26755 Acalanes Union High School District	2.8	0.7	130.2	61.3	0.0	0.0	1.4	0.2	2.8	0.0	-100.0%
TOTALS	380.0	119.7	28,088.5	15,440.6	540.2	126.1	35,990.4	15,023.6	384.9	550.9	43.1%

Stanford University ISP Usage for June 2004

24 Month Historical Usage Graphs

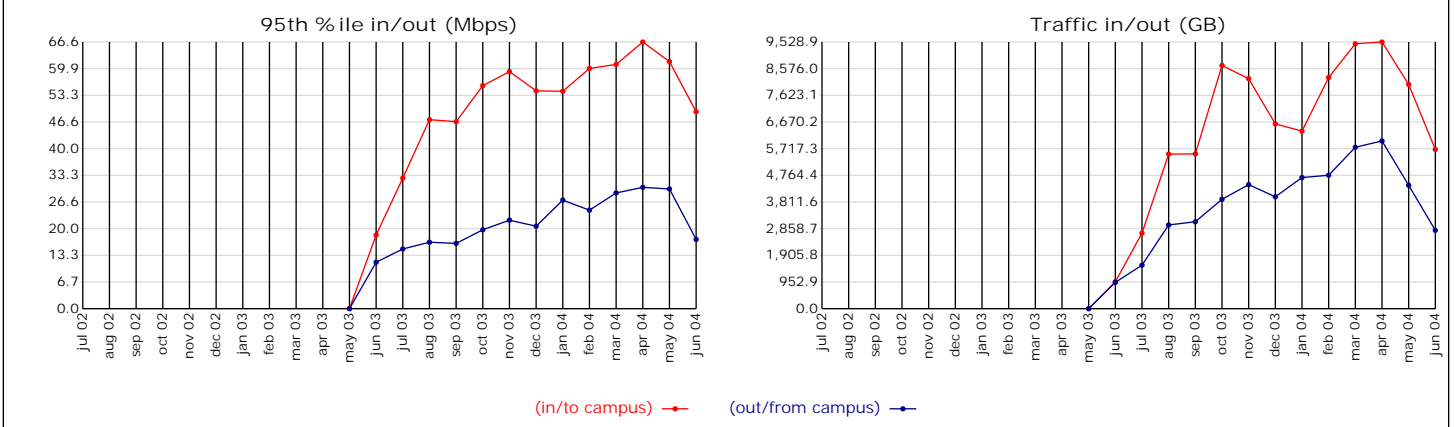


Detailed Site Usage for June 2004 (sorted by Billed Usage)												
ASN Site Name	Last Year				This Year				Last Yr Billed	This Yr Billed	Change	
	95th in	95th out	GB in	GB out	95th in	95th out	GB in	GB out				
32 Stanford University	7.7	6.9	1,376.5	1,245.2	0.0	8.8	2.1	1,605.5	7.7	8.8	14.3%	
22196 Stanford University Medical Center	0.1	0.0	10.4	1.1	0.0	0.0	0.0	2.3	0.1	0.0	-100.0%	
TOTALS		7.8	6.9	1,386.9	1,246.3	0.0	8.8	2.1	1,607.8	7.8	8.8	12.8%

University and Community College System of Nevada

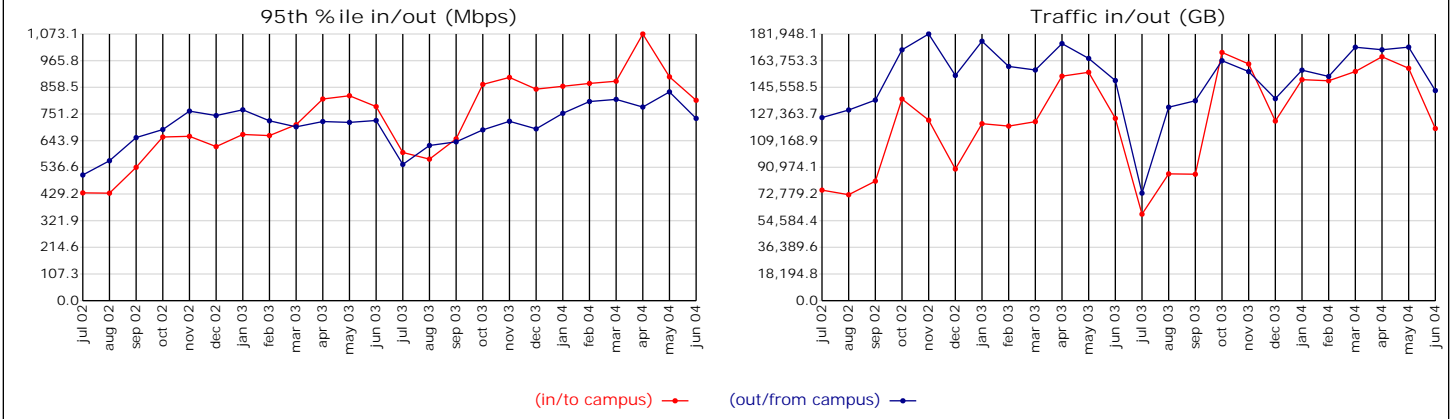
ISP Usage for June 2004

24 Month Historical Usage Graphs



Detailed Site Usage for June 2004 (sorted by Billed Usage)												
ASN	Site Name	Last Year				This Year				Last Yr	This Yr	Change
		95th in	95th out	GB in	GB out	95th in	95th out	GB in	GB out	Billed	Billed	
3851	University of Nevada	18.4	11.6	961.2	938.9	49.2	17.3	5,689.9	2,798.7	18.4	49.2	167.4%
TOTALS		18.4	11.6	961.2	938.9	49.2	17.3	5,689.9	2,798.7	18.4	49.2	167.4%

24 Month Historical Usage Graphs



Detailed Site Usage for June 2004 (sorted by Billed Usage)											
ASN Site Name	Last Year				This Year				Last Yr Billed	This Yr Billed	Change
	95th in	95th out	GB in	GB out	95th in	95th out	GB in	GB out			
52 University of California, Los Angeles	113.4	112.8	16,696.9	22,188.4	161.1	95.0	23,148.2	19,653.2	113.4	161.1	42.1%
6192 University of California, Davis	146.5	105.9	25,401.9	27,614.2	101.5	126.2	14,806.0	28,680.6	146.5	126.2	-13.9%
25 University of California, Berkeley	127.1	95.7	21,297.7	22,736.2	81.7	101.9	12,343.6	23,232.4	127.1	101.9	-19.8%
299 University of California, Irvine	68.2	51.2	11,265.8	9,194.1	97.8	76.5	15,290.8	9,397.7	68.2	97.8	43.4%
5739 University of California, Santa Cruz	76.9	55.7	11,388.7	8,984.0	97.8	69.0	11,675.7	10,193.3	76.9	97.8	27.2%
7377 University of California, San Diego	83.2	52.4	13,792.5	10,208.7	85.4	57.4	14,127.6	11,958.5	83.2	85.4	2.6%
6106 University of California, Riverside	51.6	46.7	8,479.3	10,823.4	55.9	78.1	9,427.2	16,556.7	51.6	78.1	51.4%
5653 University of California, San Francisco	49.5	132.6	6,760.8	27,221.2	54.4	57.7	6,871.7	11,831.7	132.6	57.7	-56.5%
131 University of California, Santa Barbara	36.8	39.5	5,919.0	6,158.9	47.2	38.5	7,128.5	6,969.0	39.5	47.2	19.5%
195 San Diego Super Computer Center	5.9	12.3	813.0	2,202.8	9.6	13.2	1,123.7	2,010.0	12.3	13.2	7.3%
11293 University of California, Office of the President	6.2	5.4	607.3	718.1	8.4	4.8	864.0	626.5	6.2	8.4	35.5%
1227 SDSC-test	4.1	9.3	524.4	1,195.4	0.6	7.0	81.1	973.4	9.3	7.0	-24.7%
2641 Scripps Institute	8.7	3.6	971.5	642.0	2.4	5.5	274.1	914.2	8.7	5.5	-36.8%
22323 UC Merced	n/a	n/a	n/a	n/a	1.8	0.8	170.9	113.9	n/a	1.8	n/a
1909 San Diego Supercomputer Center, ALHPA-NAP	2.0	1.7	382.8	293.9	0.7	1.8	107.1	249.0	2.0	1.8	-10.0%
1852 University of California Network	0.9	0.3	84.3	21.7	0.0	0.0	5.0	0.6	0.9	0.0	-100.0%
TOTALS	781.0	725.1	124,385.9	150,203.0	806.3	733.4	117,445.2	143,360.7	878.4	890.9	1.4%

Summary of Activity											
Site Name	Last Year				This Year				Last Yr	This Yr	Change
	95th in	95th out	GB in	GB out	95th in	95th out	GB in	GB out	Billed	Billed	
University of California	781.0	725.1	124,385.9	150,203.0	806.3	733.4	117,445.2	143,360.7	878.4	890.9	1.4%
Digital California Project	380.0	119.7	28,088.5	15,440.6	540.2	126.1	35,990.4	15,023.6	384.9	550.9	43.1%
California State University	422.3	225.4	58,162.8	49,742.9	406.7	257.2	47,825.4	40,378.2	422.3	429.7	1.8%
California Community Colleges	26.7	14.5	2,326.5	1,658.5	194.4	94.1	16,344.9	10,025.2	28.1	207.6	638.8%
University and Community College System of Nevada	18.4	11.6	961.2	938.9	49.2	17.3	5,689.9	2,798.7	18.4	49.2	167.4%
Stanford University	7.8	6.9	1,386.9	1,246.3	0.0	8.8	2.1	1,607.8	7.8	8.8	12.8%
	1,636.2	1,103.2	215,311.8	219,230.2	1,996.8	1,236.9	223,297.9	213,194.2	1,739.9	2,137.1	22.8%