

The Chamorro language across islands and generations

Manuel Flores Borja
Sandy Chung
Matt Wagers

American Memorial Park
Saipan, CNMI
September 18, 2014

National Science Foundation BCS #1251429



First example of variation

Ways to ask about possession

* **Håyi gai tråk un penta?**

Who has a truck you painted?

* **Håyi gai tråk un penta?**

Who has a truck you painted?

* **Håyi un pentåyi tråk-ña?**

Who did you paint a truck for?

* **Håyi gai tråk un penta?**

Who has a truck you painted?

* **Håyi un pentåyi tråk-ña?**

Who did you paint a truck for?

* **Håyi un penta tråk-ña?**

Whose truck did you paint?

* **Håyi gai tråk un penta?**

Who has a truck you painted?

* **Håyi un pentåyi tråk-ña?**

Who did you paint a truck for?

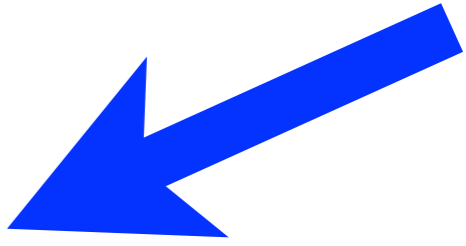
* **Håyi un penta tråk-ña?**

Whose truck did you paint?

How to form relative clauses

Observation 1
Word Order





Atan atyu na låhi i gumugu'ut i ayuyu.

Look at that man who is holding the crab.



Atan atyu na låhi i gumugu'ut i ayuyu.

Look at that man who is holding the crab.



Atan atyu i gumugu'ut i ayuyu na låhi.

Look at that man who is holding the crab.

Atan atyu na låhi i gumugu'ut i ayuyu.

Look at that man who is holding the crab.



Atan atyu i gumugu'ut i ayuyu na låhi.

Look at that man who is holding the crab.

Atan atyu i gumugu'ut i ayuyu.

Look at the one who is holding the crab.

Atan atyu na låhi i gumugu'ut i ayuyu.

Look at that man who is holding the crab.



Atan atyu i gumugu'ut i ayuyu na låhi.

Look at that man who is holding the crab.

Atan atyu i gumugu'ut i ayuyu.

Look at the one who is holding the crab.

How to form relative clauses

Observation 2

Ambiguity

atyu na låhi i ha chichiku i patgun

atyu na lãhi i ha chichiku i patgun



man who is kissing the child

atyu na lãhi i ha chichiku i patgun

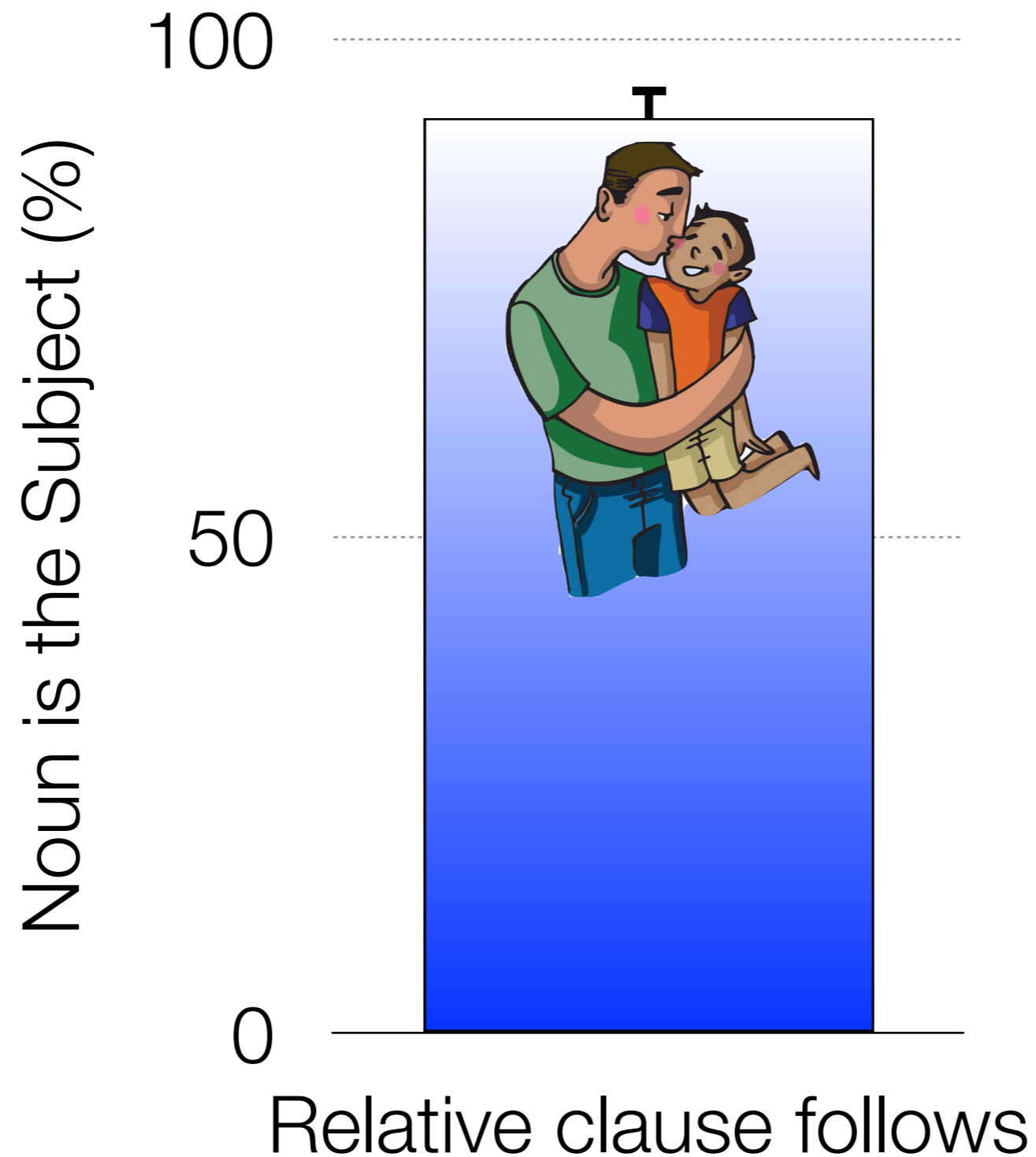


man who is kissing the child

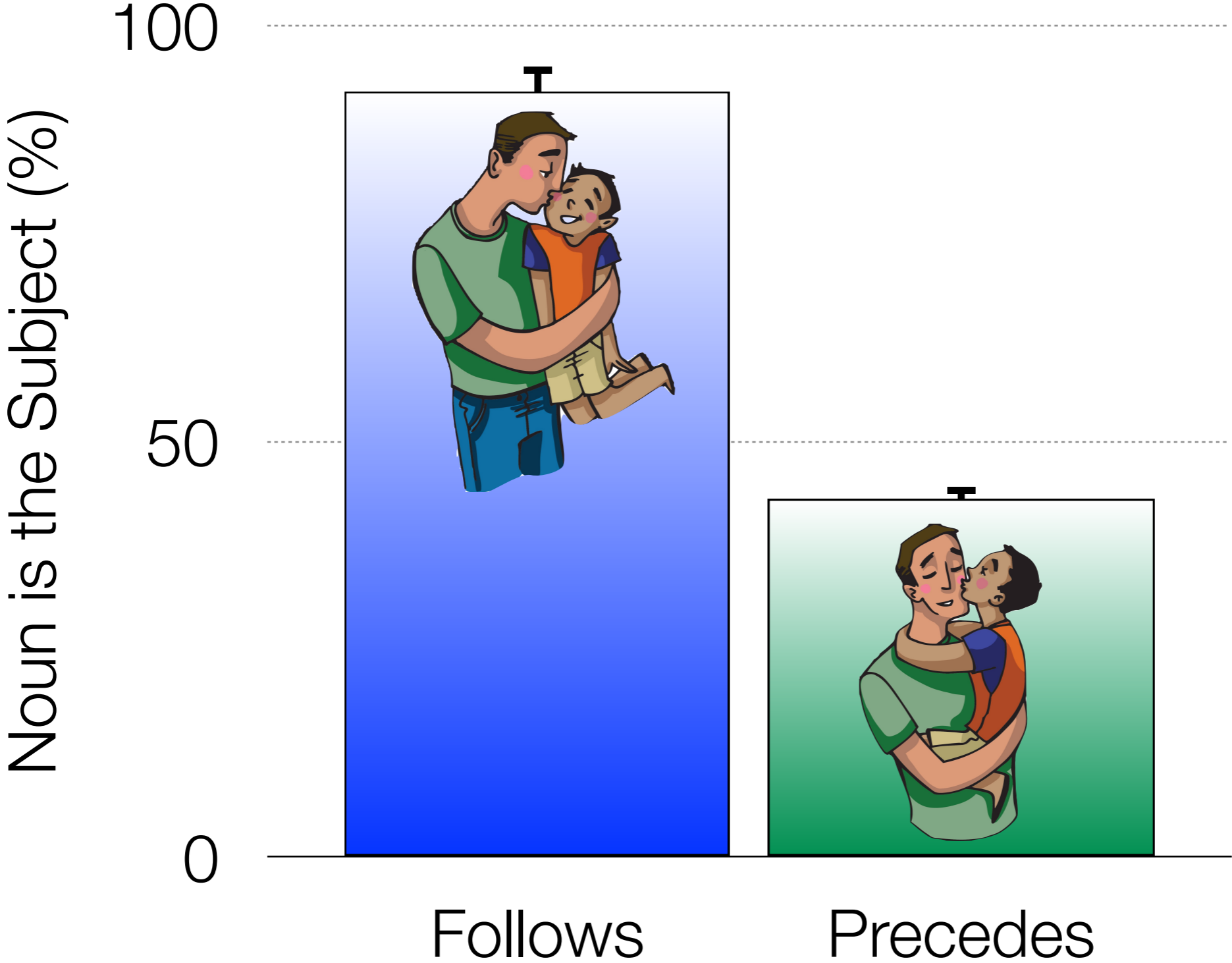


man who the child is kissing

atyu na lãhi i ha chichiku i patgun

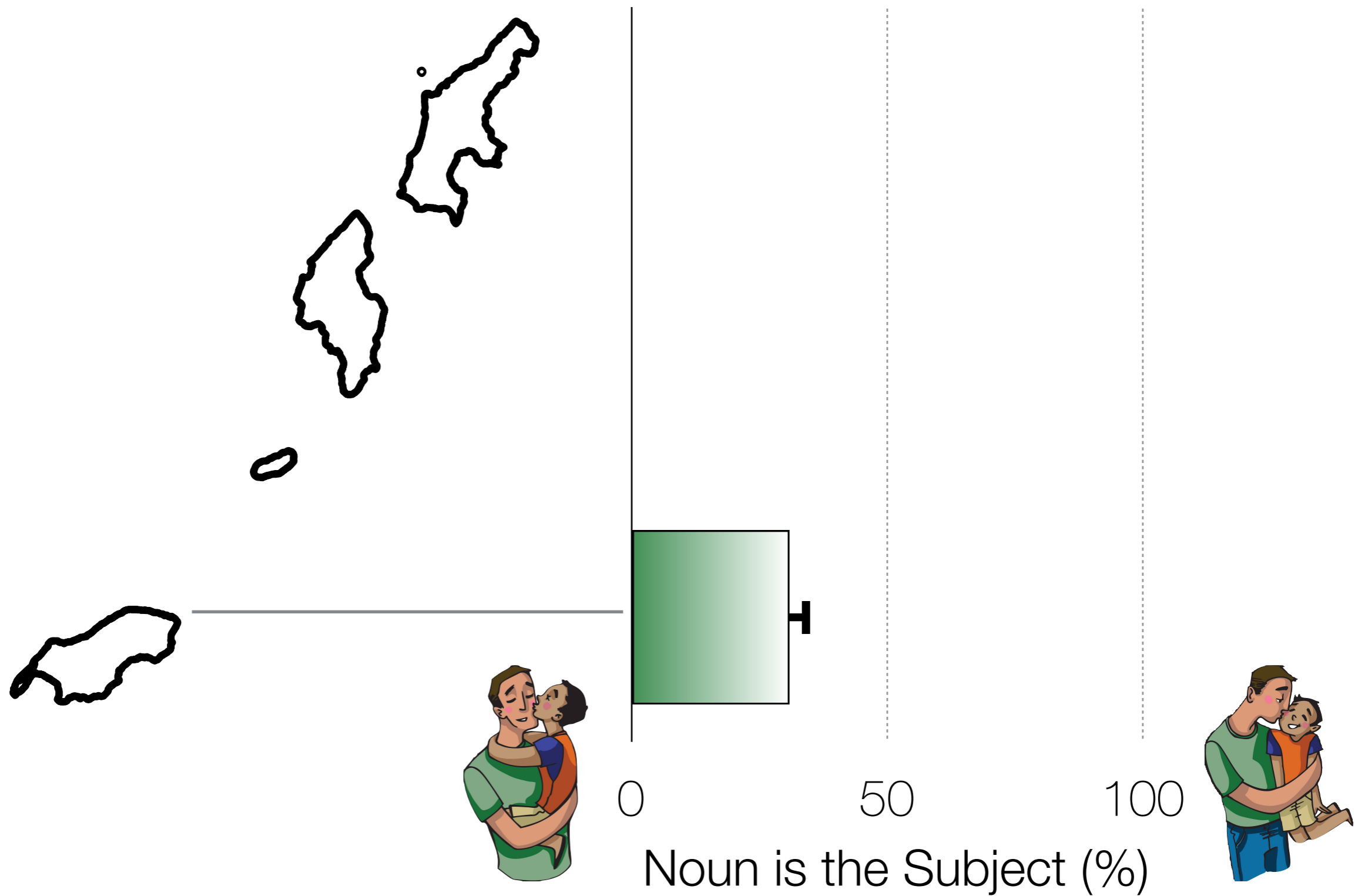


atyu na låhi i ha chichiku i patgun



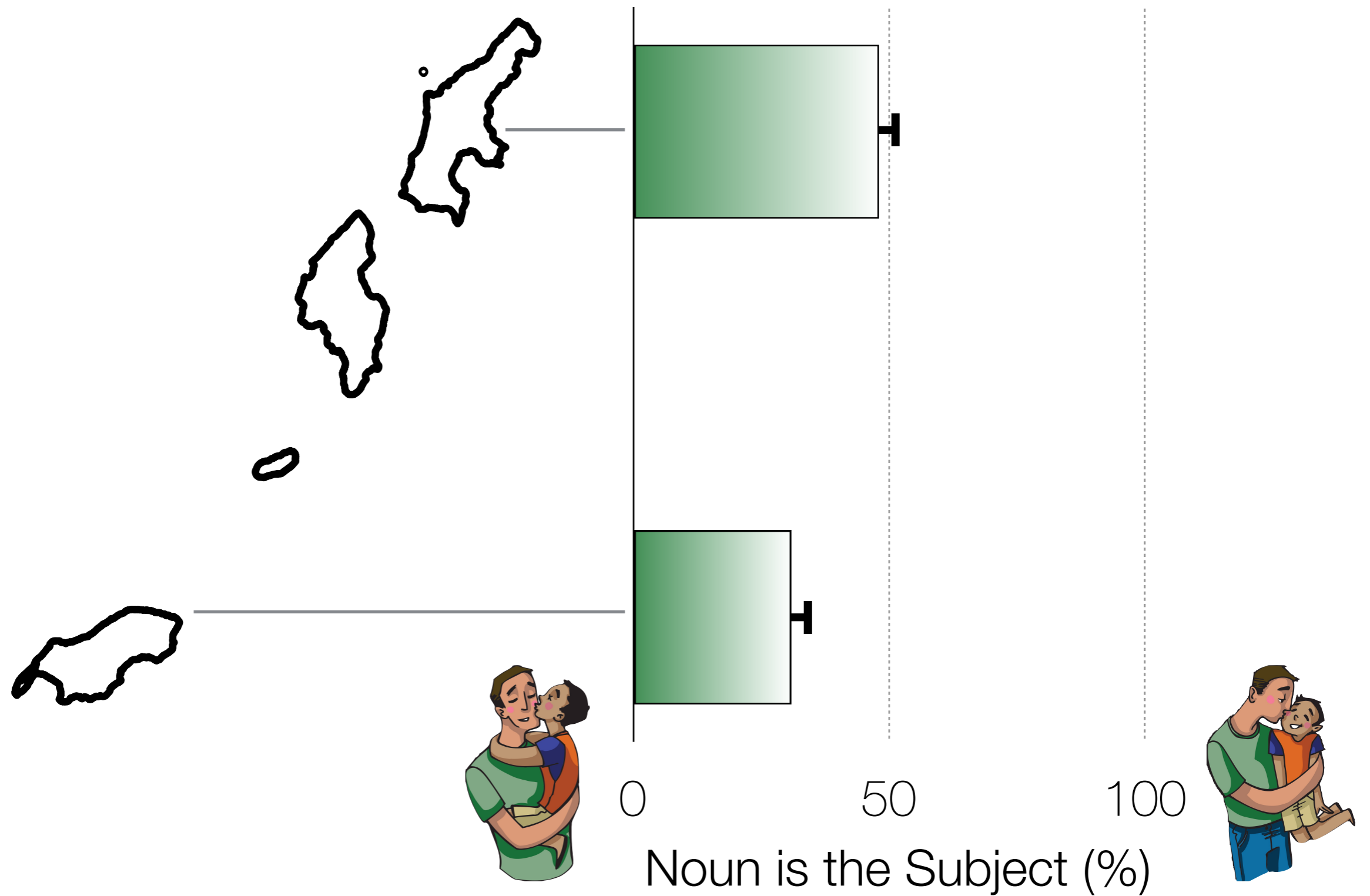
atyu i ha chichiku i patgun na låhi

Variation by Island



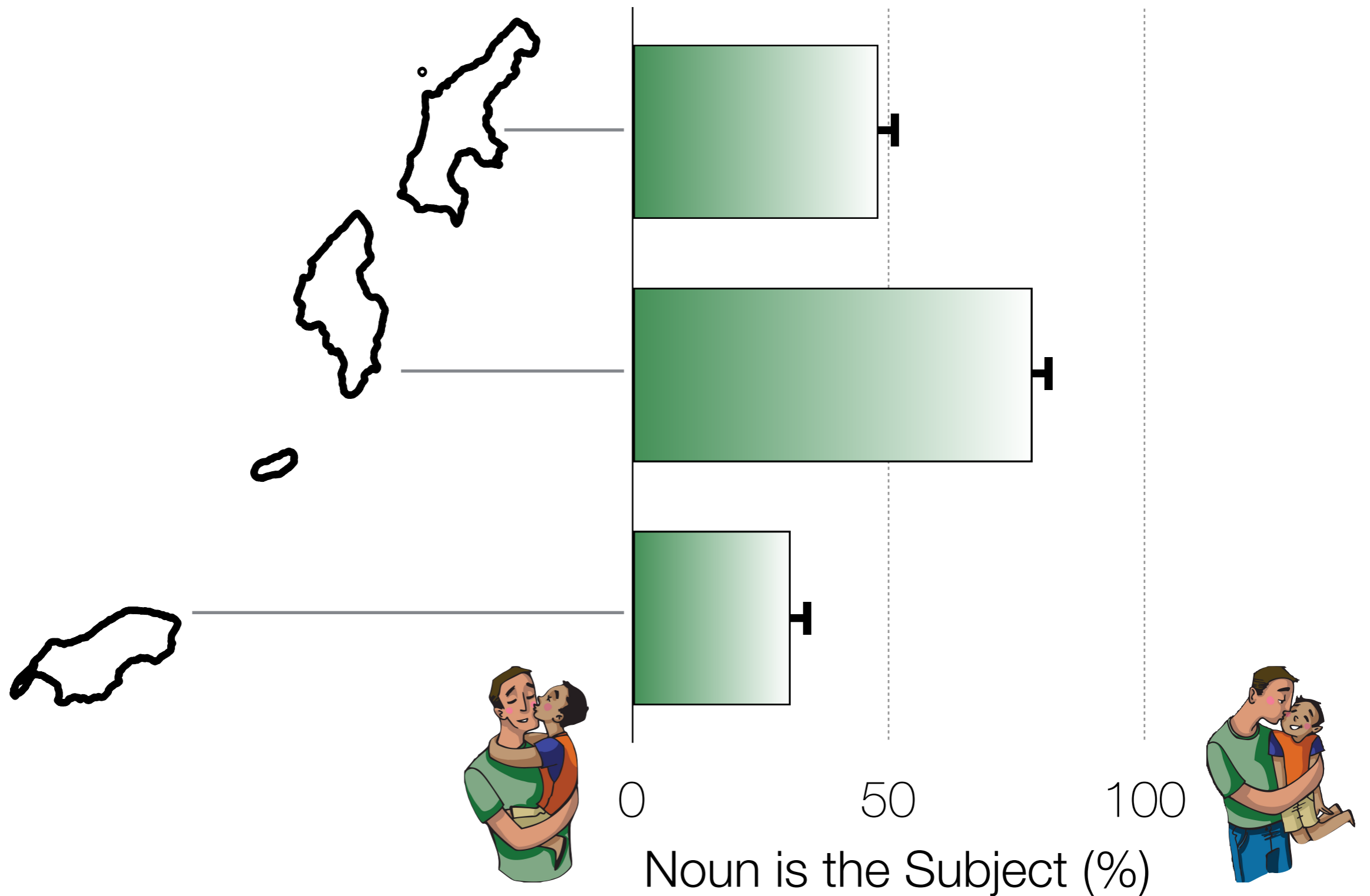
atyu i ha chichiku i patgun na lãhi

Variation by Island



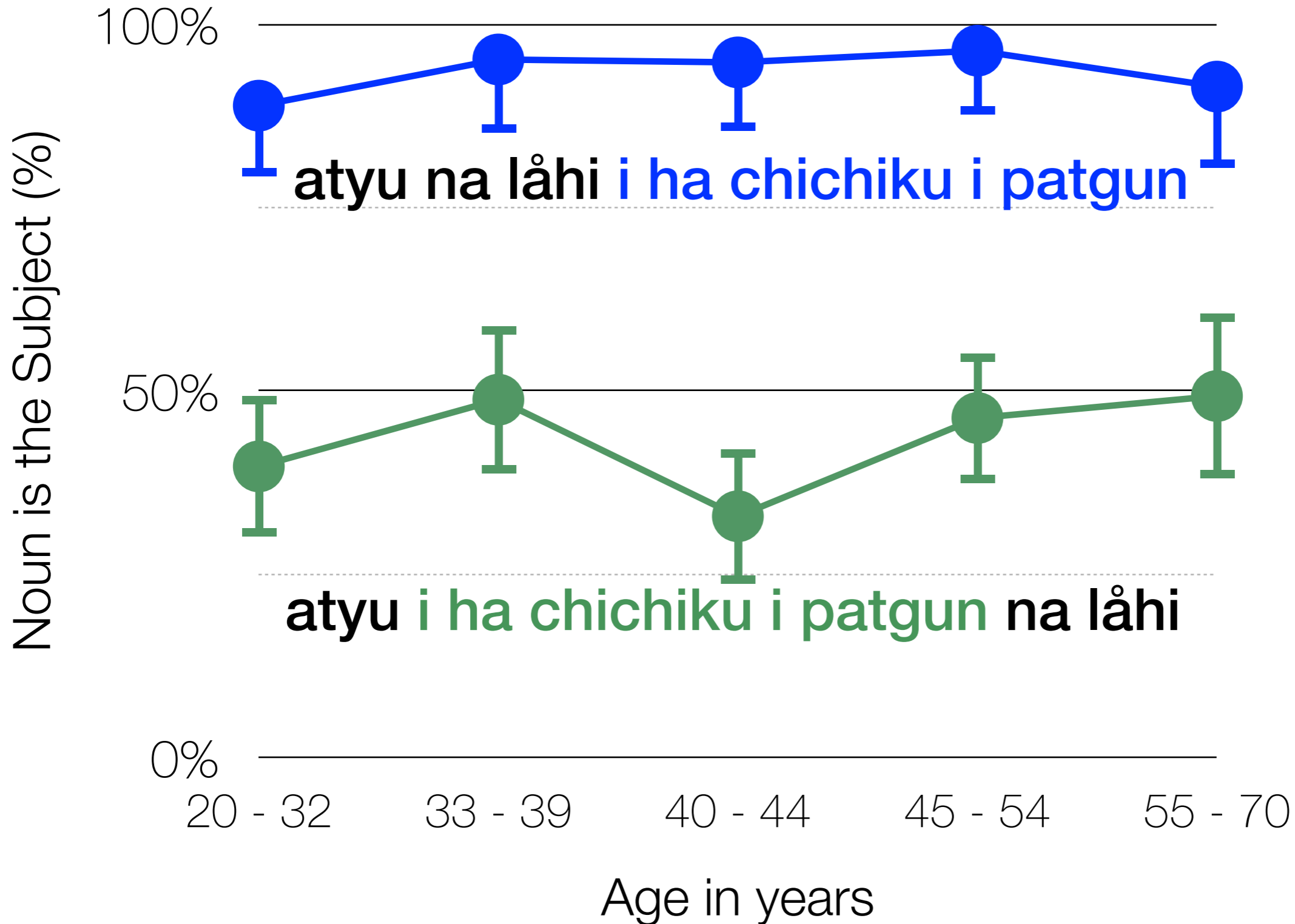
atyu i ha chichiku i patgun na lãhi

Variation by Island



atyu i ha chichiku i patgun na lãhi

Variation by Age



How to form relative clauses

Observation 3

Morphology

atyu na låhi i ha chichiku i patgun



man who is kissing the child



man who the child is kissing

atyu na lãhi i chinikuku-ña i patgun



man who is kissing the child



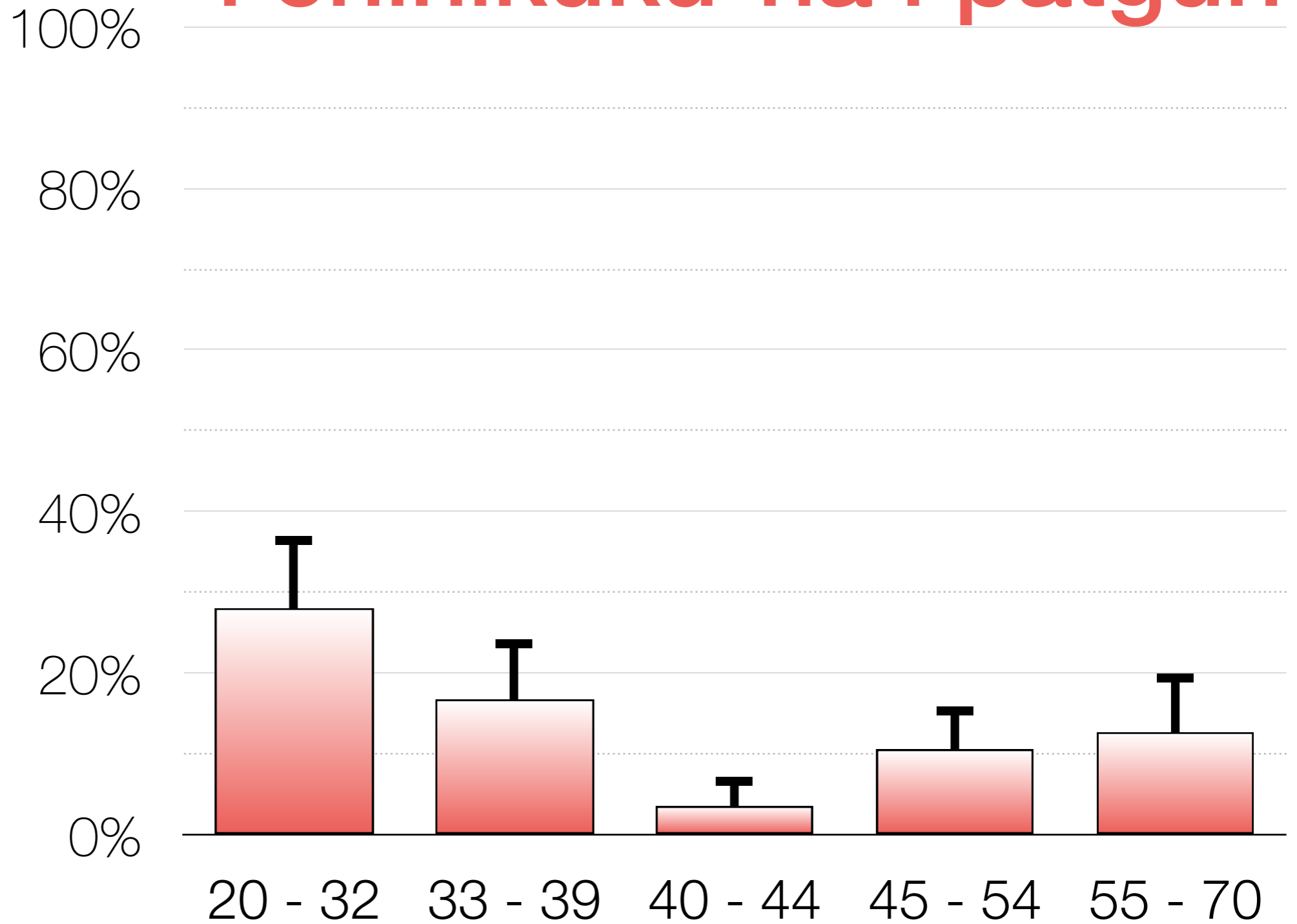
man who the child is kissing

Variation by Age

i chinikuku-ña i patgun



Noun is NOT the Object (%)



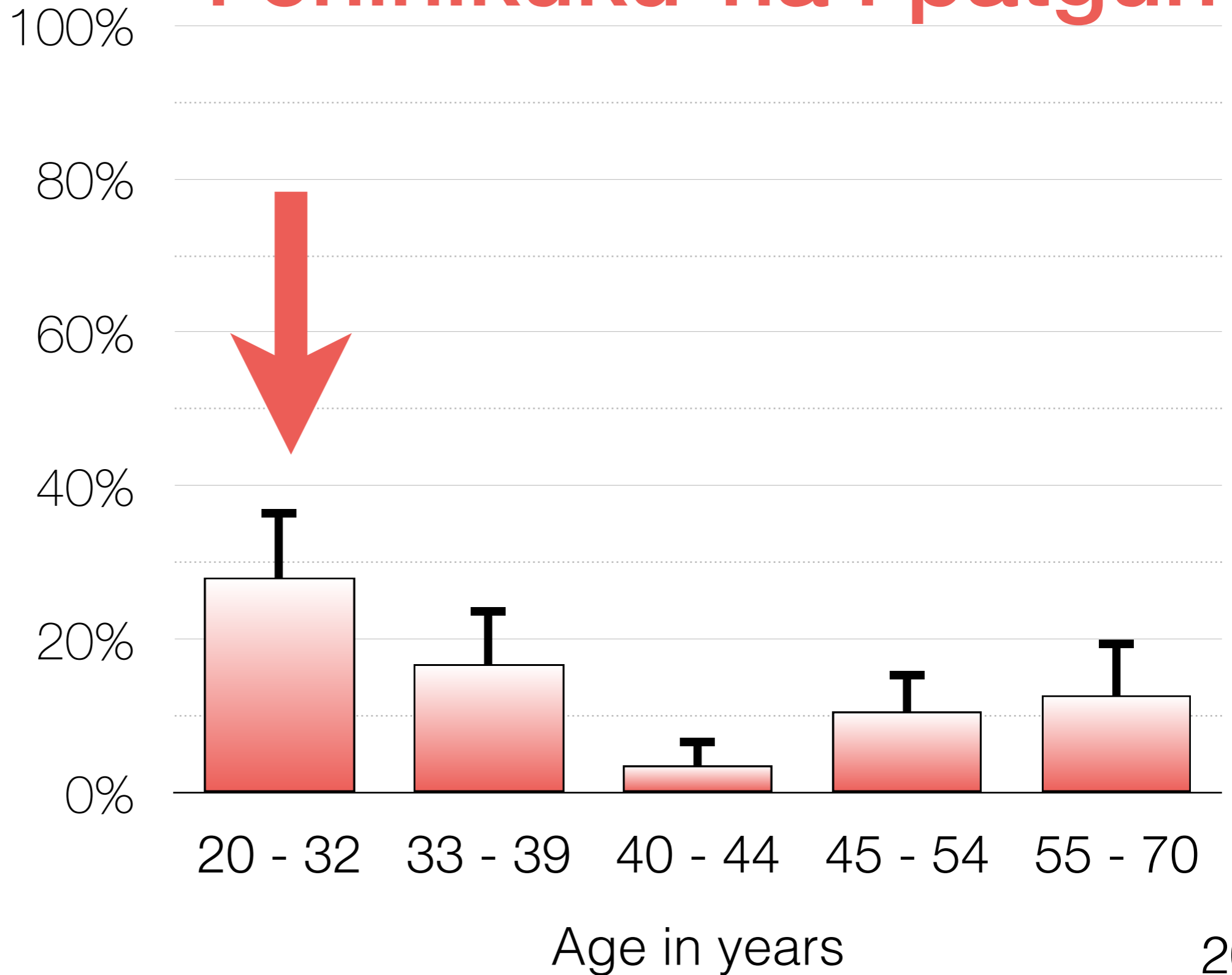
Age in years

Variation by Age



i chinikuku-ña i patgun

Noun is NOT the Object (%)



(No) Variation by Age



age (yrs)

	20 - 32	55 - 70
atyu na låhi i chinikuku-ña i patgun	47%	19%
atyu i chinikuku-ña i patgun na låhi	28%	11%
atyu i chinikuku-ña i patgun	8%	8%

Noun is NOT the object (%)

Dångkulu na Si Yu'us Ma'åsi'!

Luta

- * Tita A. Hocog
- * Rota Mayor's Office
 - * Tina Manglona
- * Municipal Council
- * Department of Commerce
- * Sinapalo School
- * Port Authority
- * Bureau of Motor Vehicles
- * Police Department



Saipan

- * Arts Council
- * Café at the Park
- * Chamorro-Carolinian Cultural Center
- * CCLPC
- * Department of Commerce
- * Garapan Elementary School
- * Frank Tomokane
- * Ignacia T. Demapan
- * Inetnun Åmut yan Kutturán Natibu
- * Joeten-Kiyu Library
 - * Rosalyn Ajoste
- * Office of Congressman Antonio R. Agulto
 - * Lupe T. Pangelinan
- * Office of Vocational Rehabilitation
- * KKMP
 - * Gary Schwartz and Gordon Marciano
- * Marianas Public Land Trust
- * Parole Board
 - * Rudy T. Guerrero
- * Tanapag Elementary School
- * W.S. Reyes Elementary School

Tinian

- * Gineftao i Manmo'na Center
- * Florine M. Hofschneider
- * Lorna Cruz

**Chamorro Dictionary
Working Groups**

NMI Humanities Council

**Alejandro Agulto
Elvin Quitugua**



Thank you ~ Si Yu'us Ma'asi'

