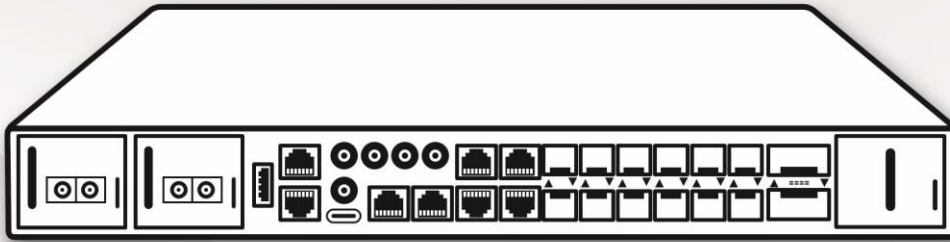


## Open Networking Platform AGCV208S



Based on Broadcom® StrataDNX™ Qumran-AX, AGCV208S is a dis-aggregated cell site gateway (DCSG) platform fully complies with carrier's radio access network requirement. Scalable and programmable architecture enables operators to deploy next generation network infrastructure.

-  Flexible Network Interface: 1GbE, 2.5GbE, 10GbE, 25GbE and 100GbE
-  Traffic Manager: Hierarchical QoS and Deep Buffering
-  Time Synchronization: SyncE and 1588v2 supported
-  Operation Efficient: 100% Front maintenance with 300 mm in depth



### Product Overview

Designed as a cell site gateway for TIP DCSG project, AGCV208S is leading the market with its compact design and full featured interfaces. Based on Broadcom's StrataDNX™ series, it utilizes Qumran AX device's traffic manager and packet buffering for mobile access network. With industrial hardened design, AGCV208S is ideal and versatile for your outdoor deployment in harsh environment.

Inside its 1RU formfactor, AGCV208S offers 4 x 1GbE BASE-T, 4 x 10GbE SFP+ and 8 x 25GbE SFP28 for the legacy and next generation equipment, 2 of 100GbE uplink makes it more attractive for future application. You could choose between 160Gbps and 300Gbps switching capacity models.

AGCV208S supports SyncE/1588v2 and comes with various time injection interfaces so that it fits into different types of deployment topology. In addition, it is an ideal CPE platform for your service network customers who requires smaller bandwidth.

### Features and Benefits

- Mixed connectivity of 4 x 1GbE BASE-T, 4 x 10GbE SFP+, 8 x 25GbE SFP28 and 2 x 100GbE QSFP28
- Up to 160Gbps/300Gbps full-duplex switching capacity
- Supporting SyncE and IEEE 1588v2 with Delta's API and Library
- Supporting multiple timing interface of 1PPS I/O, 10MHz I/O, GPS, ToD and BITS
- Hot-swappable, redundant and, load balancing 1+1 AC/DC power supply units

- Hot-swappable, 3+1 redundant fan-tray modules

## Product Application

- Service Providers: Mobile Access Networks and CPE Platform

AGCV208S

www.deltaww.com

Specifications		
Model	AGCV208S	
General		
Formfactor	1RU, 19 Inch, Rack-Mountable	
Configuration	4 x 1GbE BASE-T/ 4 x 10GbE SFP+/ 8 x 25GbE SFP28/ 2 x 100GbE QSFP28	
Management Port	1xRJ-45 10/100/1000BASE-T	
Console Port	1 x RJ-45 10/100/1000BASE-T, 1 x USB 3.0 (Type C)	
USB Port	1 x USB 3.0	
Clocking and Timing Port	2 x SMA 1PPS I/O, 2 x SMA 10MHz I/O, 1 x SMA GPS, 1 x RJ-45 ToD, 1 x RJ-45 BITS	
Key Components		
Switch Silicon	Broadcom® BCM88470 Qumran-AX	
CPU	Intel® Atom Denverton C3508 4-Cores 1.6 GHz	
System Memory	32 GB DDR4, 2 x SO-DIMM	
System Flash	32 MB, 2 x SPI Flash	
System Storage	128 GB SSD	
BMC	ASPEED AST2520	
T-CAM	N/A	
Time Synchronization	SyncE / IEEE1588v2, Microsemi ZL30364	
FAN	Hot-Swappable 3+1 Redundancy	
PSU	Hot-Swappable 1+1 Redundancy	
Performance		
Switching Capacity	300 Gbps	
Packet Buffer Memory	3 GB	
Physical and Environment		
Power Input	100V ~ 240V VAC 50/60 Hz	-48V ~ -72V VDC
Power Budget	400 Watts	



<b>Airflow</b>	Side-to-Back
<b>Operating Temperature</b>	-40°C ~ 65°C (-104°F ~ 149°F)
<b>Operating Humidity</b>	10% ~ 90% RH
<b>Storage Temperature</b>	-40°C ~ 70°C (-104°F ~ 158°F)
<b>Storage Humidity</b>	5% ~ 95% RH
<b>Dimensions (W x D x H)</b>	438.0 x 295.0 x 43.0 mm (17.2 x 11.6 x 1.7 inch)
<b>Weight</b>	5.9 kg (12.0 lbs)
<b>Regulatory Compliance</b>	
<b>Safety Certifications</b>	EN60950-1, UL/CSA 60950-1, IEC 60950-1
<b>EMI/EMC</b>	CISPR 22, EN55022, FCC Class A, VCCI

\*Specifications are subject to change without notice. © All rights reserved.